

SOWAHC Antibody - C-terminal region
Rabbit Polyclonal Antibody
Catalog # AI15473

Specification

SOWAHC Antibody - C-terminal region - Product Information

Application	WB
Primary Accession	Q53LP3
Other Accession	NM_023016 , NP_075392
Reactivity	Human, Mouse, Rat, Rabbit, Horse, Dog
Predicted	Human, Mouse, Rat, Rabbit, Horse, Dog
Host	Rabbit
Clonality	Polyclonal
Calculated MW	58kDa KDa

SOWAHC Antibody - C-terminal region - Additional Information

Gene ID 65124

Alias Symbol C2orf26, ANKRD57

Other Names

Ankyrin repeat domain-containing protein SOWAHC, Ankyrin repeat domain-containing protein 57, Protein sosondowah homolog C, SOWAHC, ANKRD57, C2orf26

Format

Liquid. Purified antibody supplied in 1x PBS buffer with 0.09% (w/v) sodium azide and 2% sucrose.

Reconstitution & Storage

Add 50 ul of distilled water. Final anti-SOWAHC antibody concentration is 1 mg/ml in PBS buffer with 2% sucrose. For longer periods of storage, store at 20°C. Avoid repeat freeze-thaw cycles.

Precautions

SOWAHC Antibody - C-terminal region is for research use only and not for use in diagnostic or therapeutic procedures.

SOWAHC Antibody - C-terminal region - Protein Information

Name SOWAHC

Synonyms ANKRD57, C2orf26

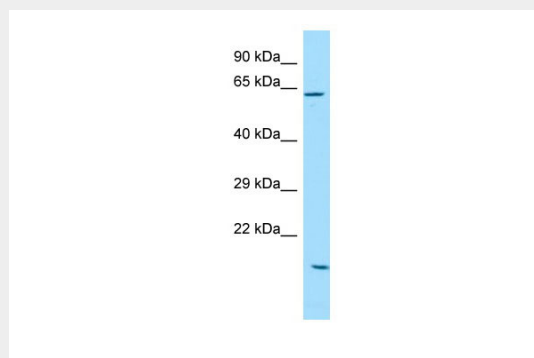
SOWAHC Antibody - C-terminal region - Protocols

Provided below are standard protocols that you may find useful for product applications.

- [Western Blot](#)

- [Blocking Peptides](#)
- [Dot Blot](#)
- [Immunohistochemistry](#)
- [Immunofluorescence](#)
- [Immunoprecipitation](#)
- [Flow Cytometry](#)
- [Cell Culture](#)

SOWAHC Antibody - C-terminal region - Images



WB Suggested Anti-SOWAHC Antibody Titration: 1.0 $\mu\text{g/ml}$
Positive Control: HeLa Whole cell

SOWAHC Antibody - C-terminal region - References

Ota T., et al. Nat. Genet. 36:40-45(2004).
Hillier L.W., et al. Nature 434:724-731(2005).
Beausoleil S.A., et al. Nat. Biotechnol. 24:1285-1292(2006).
Dephore N., et al. Proc. Natl. Acad. Sci. U.S.A. 105:10762-10767(2008).
Olsen J.V., et al. Sci. Signal. 3:RA3-RA3(2010).