

C11orf2 Antibody - C-terminal region
Rabbit Polyclonal Antibody
Catalog # AI15478**Specification**

C11orf2 Antibody - C-terminal region - Product Information

Application	WB
Primary Accession	Q9UID3
Other Accession	NM_013265 , NP_037397
Reactivity	Human, Mouse, Rat, Rabbit, Pig, Horse, Bovine, Guinea Pig, Dog
Predicted	Human, Mouse, Rat, Rabbit, Pig, Horse, Bovine, Guinea Pig, Dog
Host	Rabbit
Clonality	Polyclonal
Calculated MW	86kDa kDa

C11orf2 Antibody - C-terminal region - Additional Information**Gene ID 738**

Alias Symbol	ANG2, ANG3, C11orf3, FFR, FLJ13879, FLJ36472, C11orf2
--------------	---

Other Names

Vacuolar protein sorting-associated protein 51 homolog, Another new gene 2 protein, Protein fat-free homolog, VPS51, ANG2, C11orf2, C11orf3, FFR

Format

Liquid. Purified antibody supplied in 1x PBS buffer with 0.09% (w/v) sodium azide and 2% sucrose.

Reconstitution & Storage

Add 50 ul of distilled water. Final anti-C11orf2 antibody concentration is 1 mg/ml in PBS buffer with 2% sucrose. For longer periods of storage, store at 20°C. Avoid repeat freeze-thaw cycles.

Precautions

C11orf2 Antibody - C-terminal region is for research use only and not for use in diagnostic or therapeutic procedures.

C11orf2 Antibody - C-terminal region - Protein Information**Name VPS51**

Synonyms ANG2, C11orf2, C11orf3, FFR

Function

Acts as a component of the GARP complex that is involved in retrograde transport from early and late endosomes to the trans-Golgi network (TGN). The GARP complex is required for the maintenance of protein retrieval from endosomes to the TGN, acid hydrolase sorting, lysosome

function, endosomal cholesterol traffic and autophagy. VPS51 participates in retrograde transport of acid hydrolase receptors, likely by promoting tethering and SNARE-dependent fusion of endosome- derived carriers to the TGN (PubMed:20685960). Acts as a component of the EARP complex that is involved in endocytic recycling. The EARP complex associates with Rab4-positive endosomes and promotes recycling of internalized transferrin receptor (TFRC) to the plasma membrane (PubMed:25799061).

Cellular Location

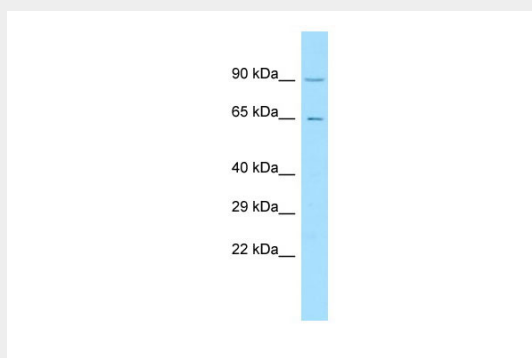
Golgi apparatus, trans-Golgi network. Recycling endosome. Note=Localizes to the trans-Golgi network as part of the GARP complex, while it localizes to recycling endosomes as part of the EARP complex (PubMed:25799061)

C11orf2 Antibody - C-terminal region - Protocols

Provided below are standard protocols that you may find useful for product applications.

- [Western Blot](#)
- [Blocking Peptides](#)
- [Dot Blot](#)
- [Immunohistochemistry](#)
- [Immunofluorescence](#)
- [Immunoprecipitation](#)
- [Flow Cytometry](#)
- [Cell Culture](#)

C11orf2 Antibody - C-terminal region - Images



WB Suggested Anti-C11orf2 Antibody Titration: 1.0 µg/ml

Positive Control: 293T Whole Cell/VPS51 is supported by BioGPS gene expression data to be expressed in HEK293T

C11orf2 Antibody - C-terminal region - References

- Lemmens I.H.,et al.Genomics 49:437-442(1998).
Lemmens I.H.,et al.Submitted (MAY-2000) to the EMBL/GenBank/DDBJ databases.
Wan D.,et al.Proc. Natl. Acad. Sci. U.S.A. 101:15724-15729(2004).
Taylor T.D.,et al.Nature 440:497-500(2006).
Bechtel S.,et al.BMC Genomics 8:399-399(2007).