

**F2RL3 Antibody - C-terminal region**  
**Rabbit Polyclonal Antibody**  
**Catalog # AI15491**

**Specification**

---

**F2RL3 Antibody - C-terminal region - Product Information**

Application	WB
Primary Accession	<a href="#">O96RIO</a>
Other Accession	<a href="#">NM_003950</a> , <a href="#">NP_003941</a>
Reactivity	Human
Predicted	Human
Host	Rabbit
Clonality	Polyclonal
Calculated MW	42kDa KDa

**F2RL3 Antibody - C-terminal region - Additional Information**

**Gene ID** 9002

**Alias Symbol** PAR4

**Other Names**

Proteinase-activated receptor 4, PAR-4, Coagulation factor II receptor-like 3, Thrombin receptor-like 3, F2RL3, PAR4

**Format**

Liquid. Purified antibody supplied in 1x PBS buffer with 0.09% (w/v) sodium azide and 2% sucrose.

**Reconstitution & Storage**

Add 50 ul of distilled water. Final anti-F2RL3 antibody concentration is 1 mg/ml in PBS buffer with 2% sucrose. For longer periods of storage, store at 20°C. Avoid repeat freeze-thaw cycles.

**Precautions**

F2RL3 Antibody - C-terminal region is for research use only and not for use in diagnostic or therapeutic procedures.

**F2RL3 Antibody - C-terminal region - Protein Information**

**Name** F2RL3

**Synonyms** PAR4

**Function**

Receptor for activated thrombin or trypsin coupled to G proteins that stimulate phosphoinositide hydrolysis (PubMed:[10079109](http://www.uniprot.org/citations/10079109)). May play a role in platelets activation (PubMed:[10079109](http://www.uniprot.org/citations/10079109)).

**Cellular Location**

Cell membrane; Multi-pass membrane protein.

#### Tissue Location

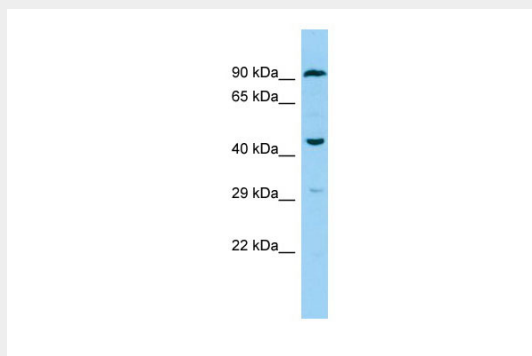
Widely expressed, with highest levels in lung, pancreas, thyroid, testis and small intestine. Not expressed in brain, kidney, spinal cord and peripheral blood leukocytes. Also detected in platelets

#### F2RL3 Antibody - C-terminal region - Protocols

Provided below are standard protocols that you may find useful for product applications.

- [Western Blot](#)
- [Blocking Peptides](#)
- [Dot Blot](#)
- [Immunohistochemistry](#)
- [Immunofluorescence](#)
- [Immunoprecipitation](#)
- [Flow Cytometry](#)
- [Cell Culture](#)

#### F2RL3 Antibody - C-terminal region - Images



Host: Rabbit

Target Name: F2RL3

Sample Tissue: THP-1 Whole cell lysate

s

Antibody Dilution: 1.0µg/ml

#### F2RL3 Antibody - C-terminal region - References

Kahn M.L., et al. J. Biol. Chem. 273:23290-23296(1998).

Kahn M.L., et al. Nature 394:690-694(1998).

Xu W.-F., et al. Proc. Natl. Acad. Sci. U.S.A. 95:6642-6646(1998).

King M.M., et al. Submitted (OCT-2003) to the EMBL/GenBank/DDBJ databases.

Kahn M.L., et al. J. Clin. Invest. 103:879-887(1999).