

HKDC1 Antibody - C-terminal region
Rabbit Polyclonal Antibody
Catalog # AI15500**Specification**

HKDC1 Antibody - C-terminal region - Product Information

| | |
|-------------------|---|
| Application | WB |
| Primary Accession | Q2TB90 |
| Other Accession | NM_025130 , NP_079406 |
| Reactivity | Human, Mouse, Rat, Rabbit, Pig, Horse, Bovine, Dog |
| Predicted | Human, Mouse, Rat, Rabbit, Pig, Horse, Bovine, Dog |
| Host | Rabbit |
| Clonality | Polyclonal |
| Calculated MW | 102kDa KDa |

HKDC1 Antibody - C-terminal region - Additional Information**Gene ID** 80201**Other Names**

Putative hexokinase HKDC1, 2.7.1.1, Hexokinase domain-containing protein 1, HKDC1

Format

Liquid. Purified antibody supplied in 1x PBS buffer with 0.09% (w/v) sodium azide and 2% sucrose.

Reconstitution & Storage

Add 50 ul of distilled water. Final anti-HKDC1 antibody concentration is 1 mg/ml in PBS buffer with 2% sucrose. For longer periods of storage, store at 20°C. Avoid repeat freeze-thaw cycles.

Precautions

HKDC1 Antibody - C-terminal region is for research use only and not for use in diagnostic or therapeutic procedures.

HKDC1 Antibody - C-terminal region - Protein Information**Name** HKDC1 ([HGNC:23302](#))**Function**

Catalyzes the phosphorylation of hexose to hexose 6- phosphate, although at very low level compared to other hexokinases (PubMed: [30517626](http://www.uniprot.org/citations/30517626)). Has low glucose phosphorylating activity compared to other hexokinases (PubMed: [30517626](http://www.uniprot.org/citations/30517626)). Involved in glucose homeostasis and hepatic lipid accumulation. Required to maintain whole-body glucose homeostasis during pregnancy; however additional evidences are required to confirm this role (By similarity).

Cellular Location

Cytoplasm. Mitochondrion membrane; Peripheral membrane protein. Photoreceptor inner segment {ECO:0000250|UniProtKB:Q91W97}. Note=The mitochondrial-binding peptide (MBP) region promotes association with the mitochondrion

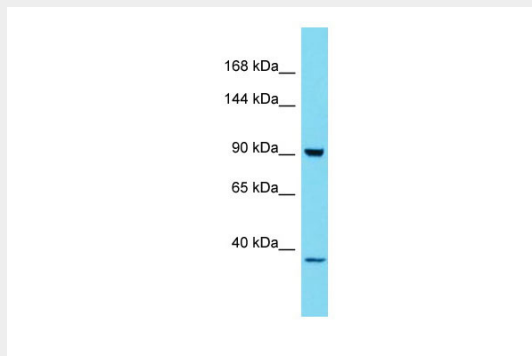
Tissue Location

Widely expressed (PubMed:27459389, PubMed:29401404). Highly expressed in the brush border, surface epithelium and the myenteric plexus of the small and large intestines; the acinar centrocytes and interlobular ducts of the pancreas; and the alveolar macrophages in the lungs (at protein level) (PubMed:29401404) Present at moderate level in the thyroid follicular epithelium (at protein level) (PubMed:29401404).

HKDC1 Antibody - C-terminal region - Protocols

Provided below are standard protocols that you may find useful for product applications.

- [Western Blot](#)
- [Blocking Peptides](#)
- [Dot Blot](#)
- [Immunohistochemistry](#)
- [Immunofluorescence](#)
- [Immunoprecipitation](#)
- [Flow Cytometry](#)
- [Cell Culture](#)

HKDC1 Antibody - C-terminal region - Images

Host: Rabbit

Target Name: HKDC1

Sample Tissue: 293T Whole cell lysate

s

Antibody Dilution: 1.0µg/ml

HKDC1 Antibody - C-terminal region - References

Deloukas P., et al. Nature 429:375-381(2004).

Ota T., et al. Nat. Genet. 36:40-45(2004).

Bechtel S., et al. BMC Genomics 8:399-399(2007).

Burkard T.R., et al. BMC Syst. Biol. 5:17-17(2011).