

PRSS33 Antibody - C-terminal region
Rabbit Polyclonal Antibody
Catalog # AI15530**Specification**

PRSS33 Antibody - C-terminal region - Product Information

Application	WB
Primary Accession	Q8NF86
Other Accession	NM_152891 , NP_690851
Reactivity	Human, Mouse, Rat, Rabbit, Horse, Bovine, Guinea Pig, Dog
Predicted	Human, Mouse, Rat, Rabbit, Pig, Horse, Bovine, Guinea Pig, Dog
Host	Rabbit
Clonality	Polyclonal
Calculated MW	31kDa KDa

PRSS33 Antibody - C-terminal region - Additional Information**Gene ID** 260429

Alias Symbol	EOS
Other Names	
Serine protease 33, 3.4.21.-, Serine protease EOS, PRSS33	

Format

Liquid. Purified antibody supplied in 1x PBS buffer with 0.09% (w/v) sodium azide and 2% sucrose.

Reconstitution & Storage

Add 50 ul of distilled water. Final anti-PRSS33 antibody concentration is 1 mg/ml in PBS buffer with 2% sucrose. For longer periods of storage, store at 20°C. Avoid repeat freeze-thaw cycles.

Precautions

PRSS33 Antibody - C-terminal region is for research use only and not for use in diagnostic or therapeutic procedures.

PRSS33 Antibody - C-terminal region - Protein Information**Name** PRSS33**Function**

Serine protease that has amidolytic activity, cleaving its substrates before Arg residues.

Cellular Location

Secreted.

Tissue Location

Predominantly expressed in macrophages. Present in the spleen, small and large intestine, lung

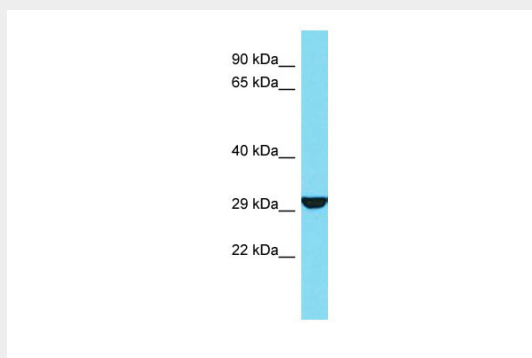
and brain (at protein level). Highly expressed in peripheral leukocytes, ovary, retina, spleen and stomach. Moderately expressed in thymus, uterus and platelets, as well as some brain tissues, such as thalamus and fetal brain.

PRSS33 Antibody - C-terminal region - Protocols

Provided below are standard protocols that you may find useful for product applications.

- [Western Blot](#)
- [Blocking Peptides](#)
- [Dot Blot](#)
- [Immunohistochemistry](#)
- [Immunofluorescence](#)
- [Immunoprecipitation](#)
- [Flow Cytometry](#)
- [Cell Culture](#)

PRSS33 Antibody - C-terminal region - Images



Host: Rabbit

Target Name: PRSS33

Sample Tissue: 721_B Whole cell lysate

s

Antibody Dilution: 1.0µg/ml