

AFAP1L1 Antibody - C-terminal region
Rabbit Polyclonal Antibody
Catalog # AI15551**Specification**

AFAP1L1 Antibody - C-terminal region - Product Information

Application	WB
Primary Accession	Q8TED9
Other Accession	NM_001146337 , NP_001139809
Reactivity	Human, Mouse, Rat, Rabbit, Pig, Horse, Bovine, Guinea Pig, Dog
Predicted	Human, Mouse, Rat, Rabbit, Pig, Horse, Bovine, Guinea Pig, Dog
Host	Rabbit
Clonality	Polyclonal
Calculated MW	79kDa KDa

AFAP1L1 Antibody - C-terminal region - Additional Information**Gene ID** 134265**Other Names**

Actin filament-associated protein 1-like 1, AFAP1-like protein 1, AFAP1L1

Format

Liquid. Purified antibody supplied in 1x PBS buffer with 0.09% (w/v) sodium azide and 2% sucrose.

Reconstitution & Storage

Add 50 ul of distilled water. Final anti-AFAP1L1 antibody concentration is 1 mg/ml in PBS buffer with 2% sucrose. For longer periods of storage, store at 20°C. Avoid repeat freeze-thaw cycles.

Precautions

AFAP1L1 Antibody - C-terminal region is for research use only and not for use in diagnostic or therapeutic procedures.

AFAP1L1 Antibody - C-terminal region - Protein Information**Name** AFAP1L1**Function**

May be involved in podosome and invadosome formation.

Cellular Location

Cytoplasm. Cell projection, podosome. Cell projection, invadopodium. Cytoplasm, cytoskeleton, stress fiber

Tissue Location

Expressed in breast, colon and brain. In all 3 tissues, expressed in the microvasculature (at protein

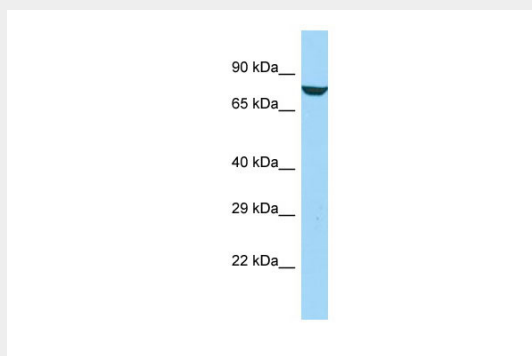
level). In addition, in the breast, found in the contractile myoepithelial cell layer which surrounds the breast ducts (at protein level). In the colon, expressed in the mucous membrane and colonic crypts and in the smooth muscle cell layer which provide movement of the colon (at protein level). In the cerebellum, localized around the Purkinje neurons and the granule cells of the granular layer, but not inside cell bodies (at protein level). Outside of the cerebellar cortex, expressed in glial cells (at protein level). Highly expressed away from the cell bodies within the dentate nucleus (at protein level)

AFAP1L1 Antibody - C-terminal region - Protocols

Provided below are standard protocols that you may find useful for product applications.

- [Western Blot](#)
- [Blocking Peptides](#)
- [Dot Blot](#)
- [Immunohistochemistry](#)
- [Immunofluorescence](#)
- [Immunoprecipitation](#)
- [Flow Cytometry](#)
- [Cell Culture](#)

AFAP1L1 Antibody - C-terminal region - Images



Host: Rabbit
Target Name: AFAP1L1
Sample Tissue: Jurkat Whole cell lysate
s
Antibody Dilution: 1.0µg/ml