

CEP85L Antibody - C-terminal region
Rabbit Polyclonal Antibody
Catalog # AI15565**Specification**

CEP85L Antibody - C-terminal region - Product Information

Application	WB
Primary Accession	Q5SZL2
Other Accession	NM_206921 , NP_996804
Reactivity	Human, Mouse, Rat, Rabbit, Pig, Horse, Yeast, Bovine, Guinea Pig, Dog
Predicted	Human, Mouse, Rat, Rabbit, Pig, Horse, Yeast, Bovine, Guinea Pig, Dog
Host	Rabbit
Clonality	Polyclonal
Calculated MW	43kDa KDa

CEP85L Antibody - C-terminal region - Additional Information**Gene ID** 387119**Alias Symbol** C6orf204, NY-BR-15, bA57K17.2**Other Names**

Centrosomal protein of 85 kDa-like, Serologically defined breast cancer antigen NY-BR-15, CEP85L, C6orf204

Format

Liquid. Purified antibody supplied in 1x PBS buffer with 0.09% (w/v) sodium azide and 2% sucrose.

Reconstitution & Storage

Add 50 ul of distilled water. Final anti-CEP85L antibody concentration is 1 mg/ml in PBS buffer with 2% sucrose. For longer periods of storage, store at 20°C. Avoid repeat freeze-thaw cycles.

Precautions

CEP85L Antibody - C-terminal region is for research use only and not for use in diagnostic or therapeutic procedures.

CEP85L Antibody - C-terminal region - Protein Information**Name** CEP85L ([HGNC:21638](#))**Synonyms** C6orf204**Function**

Plays an essential role in neuronal cell migration.

Cellular Location

Cytoplasm, cytoskeleton, microtubule organizing center, centrosome Note=Localized specifically

to the pericentriolar region

Tissue Location

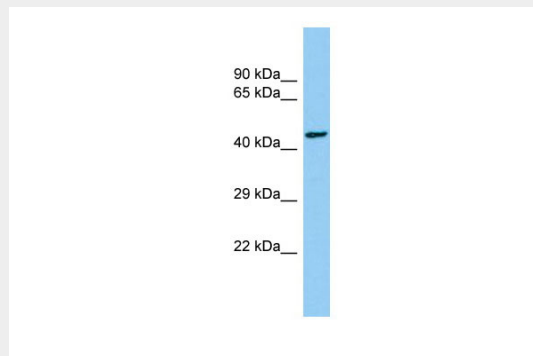
Isoform 1 and isoform 4 are expressed in spleen, lymph, thymus, tonsil and peripheral blood leukocytes, with isoform 1 expressed at higher levels. Isoform 4 is detected in K-562 leukemia cells and in the blood of precursor T lymphoblastic lymphoma (T-ALL) patients.

CEP85L Antibody - C-terminal region - Protocols

Provided below are standard protocols that you may find useful for product applications.

- [Western Blot](#)
- [Blocking Peptides](#)
- [Dot Blot](#)
- [Immunohistochemistry](#)
- [Immunofluorescence](#)
- [Immunoprecipitation](#)
- [Flow Cytometry](#)
- [Cell Culture](#)

CEP85L Antibody - C-terminal region - Images



Host: Rabbit

Target Name: CEP85L

Sample Tissue: Hela Whole cell lysate

s

Antibody Dilution: 1.0µg/ml