

CCDC135 Antibody - C-terminal region
Rabbit Polyclonal Antibody
Catalog # AI15586**Specification**

CCDC135 Antibody - C-terminal region - Product Information

Application	WB
Primary Accession	Q8IY82
Other Accession	NM_032269 , NP_115645
Reactivity	Human, Mouse, Rat, Rabbit, Pig, Horse, Bovine, Guinea Pig, Dog
Predicted	Human, Mouse, Rat, Rabbit, Pig, Horse, Bovine, Guinea Pig, Dog
Host	Rabbit
Clonality	Polyclonal
Calculated MW	96kDa KDa

CCDC135 Antibody - C-terminal region - Additional Information**Gene ID** 84229**Alias Symbol** **C16orf50****Other Names**

Coiled-coil domain-containing protein lobo homolog, Coiled-coil domain-containing protein 135, CCDC135, C16orf50

Format

Liquid. Purified antibody supplied in 1x PBS buffer with 0.09% (w/v) sodium azide and 2% sucrose.

Reconstitution & Storage

Add 50 ul of distilled water. Final anti-CCDC135 antibody concentration is 1 mg/ml in PBS buffer with 2% sucrose. For longer periods of storage, store at 20°C. Avoid repeat freeze-thaw cycles.

Precautions

CCDC135 Antibody - C-terminal region is for research use only and not for use in diagnostic or therapeutic procedures.

CCDC135 Antibody - C-terminal region - Protein Information**Name** DRC7**Synonyms** C16orf50, CCDC135**Function**

Component of the nexin-dynein regulatory complex (N-DRC) a key regulator of ciliary/flagellar motility which maintains the alignment and integrity of the distal axoneme and regulates microtubule sliding in motile axonemes (By similarity). Involved in the regulation of flagellar motility (By similarity). Essential for male fertility, sperm head morphogenesis and sperm

flagellum formation (By similarity).

Cellular Location

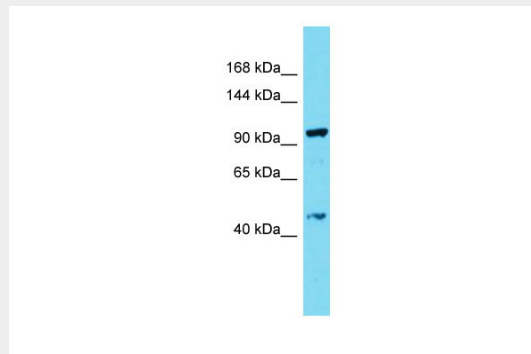
Cell projection, cilium, flagellum {ECO:0000250|UniProtKB:A8JAM0}. Cytoplasm, cytoskeleton, cilium axoneme {ECO:0000250|UniProtKB:A8JAM0}. Cytoplasm, cytoskeleton, flagellum axoneme {ECO:0000250|UniProtKB:A8JAM0}. Note=Associated with the outer doublet microtubules (OD). {ECO:0000250|UniProtKB:A8JAM0}

CCDC135 Antibody - C-terminal region - Protocols

Provided below are standard protocols that you may find useful for product applications.

- [Western Blot](#)
- [Blocking Peptides](#)
- [Dot Blot](#)
- [Immunohistochemistry](#)
- [Immunofluorescence](#)
- [Immunoprecipitation](#)
- [Flow Cytometry](#)
- [Cell Culture](#)

CCDC135 Antibody - C-terminal region - Images



Host: Rabbit
Target Name: CCDC135
Sample Tissue: THP-1 Whole cell lysate
s
Antibody Dilution: 1.0µg/ml

CCDC135 Antibody - C-terminal region - References

Ota T., et al. Nat. Genet. 36:40-45(2004).
Martin J., et al. Nature 432:988-994(2004).
Wiemann S., et al. Genome Res. 11:422-435(2001).