

CCDC144A Antibody - C-terminal region
Rabbit Polyclonal Antibody
Catalog # AI15625

Specification

CCDC144A Antibody - C-terminal region - Product Information

Application	WB
Primary Accession	B7ZM27
Reactivity	Human
Predicted	Human
Host	Rabbit
Clonality	Polyclonal
Calculated MW	156kDa KDa

CCDC144A Antibody - C-terminal region - Additional Information

Format

Liquid. Purified antibody supplied in 1x PBS buffer with 0.09% (w/v) sodium azide and 2% sucrose.

Reconstitution & Storage

Add 50 μ l of distilled water. Final Anti-CCDC144A antibody concentration is 1 mg/ml in PBS buffer with 2% sucrose. For longer periods of storage, store at -20°C. Avoid repeat freeze-thaw cycles.

Precautions

CCDC144A Antibody - C-terminal region is for research use only and not for use in diagnostic or therapeutic procedures.

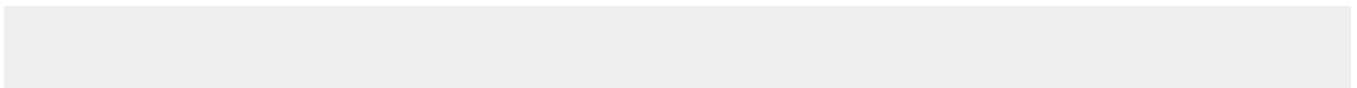
CCDC144A Antibody - C-terminal region - Protein Information

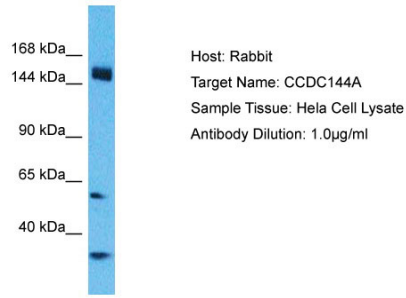
CCDC144A Antibody - C-terminal region - Protocols

Provided below are standard protocols that you may find useful for product applications.

- [Western Blot](#)
- [Blocking Peptides](#)
- [Dot Blot](#)
- [Immunohistochemistry](#)
- [Immunofluorescence](#)
- [Immunoprecipitation](#)
- [Flow Cytometry](#)
- [Cell Culture](#)

CCDC144A Antibody - C-terminal region - Images





Host: Rabbit
Target Name: CCDC144A
Sample Tissue: Hela Cell Lysate
Antibody Dilution: 1.0µg/ml

Host: Rabbit
Target Name: CCDC144A
Sample Tissue: Hela Whole cell lysate
S
Antibody Dilution: 1.0µg/ml