

PHOCN Antibody - N-terminal region
Rabbit Polyclonal Antibody
Catalog # AI15631

Specification

PHOCN Antibody - N-terminal region - Product Information

Application	WB
Primary Accession	O9Y3A3-2
Other Accession	NP_955776
Reactivity	Human
Host	Rabbit
Clonality	Polyclonal
Calculated MW	21kDa KDa

PHOCN Antibody - N-terminal region - Additional Information

Alias Symbol	MOB4, MOB3, MOBKL3, PHOCN, PREI3, CGI-95,
--------------	---

Format

Liquid. Purified antibody supplied in 1x PBS buffer with 0.09% (w/v) sodium azide and 2% sucrose.

Reconstitution & Storage

Add 50 μ l of distilled water. Final Anti-PHOCN antibody concentration is 1 mg/ml in PBS buffer with 2% sucrose. For longer periods of storage, store at -20°C. Avoid repeat freeze-thaw cycles.

Precautions

PHOCN Antibody - N-terminal region is for research use only and not for use in diagnostic or therapeutic procedures.

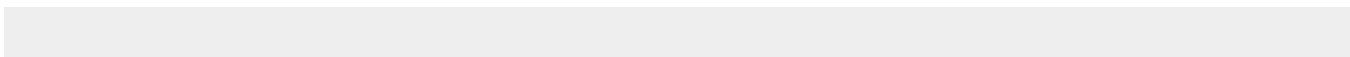
PHOCN Antibody - N-terminal region - Protein Information

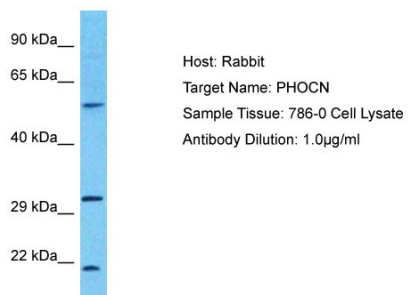
PHOCN Antibody - N-terminal region - Protocols

Provided below are standard protocols that you may find useful for product applications.

- [Western Blot](#)
- [Blocking Peptides](#)
- [Dot Blot](#)
- [Immunohistochemistry](#)
- [Immunofluorescence](#)
- [Immunoprecipitation](#)
- [Flow Cytometry](#)
- [Cell Culture](#)

PHOCN Antibody - N-terminal region - Images





Host: Rabbit
Target Name: PHOCN
Sample Tissue: 786-0 Whole Cell lysates
Antibody Dilution: 1.0µg/ml