

APOPT1 Antibody - C-terminal region
Rabbit Polyclonal Antibody
Catalog # AI15693**Specification**

APOPT1 Antibody - C-terminal region - Product Information

Application	WB
Primary Accession	O96IL0
Other Accession	NM_032374 , NP_115750
Reactivity	Human, Horse, Bovine
Predicted	Human, Horse, Bovine
Host	Rabbit
Clonality	Polyclonal
Calculated MW	20kDa KDa

APOPT1 Antibody - C-terminal region - Additional Information**Gene ID** 84334**Alias Symbol** **APOP1, C14orf153****Other Names**

Apoptogenic protein 1, mitochondrial, APOP-1, APOPT1, APOP1, C14orf153

Format

Liquid. Purified antibody supplied in 1x PBS buffer with 0.09% (w/v) sodium azide and 2% sucrose.

Reconstitution & Storage

Add 50 ul of distilled water. Final anti-APOPT1 antibody concentration is 1 mg/ml in PBS buffer with 2% sucrose. For longer periods of storage, store at 20°C. Avoid repeat freeze-thaw cycles.

Precautions

APOPT1 Antibody - C-terminal region is for research use only and not for use in diagnostic or therapeutic procedures.

APOPT1 Antibody - C-terminal region - Protein Information**Name** COA8 ([HGNC:20492](#))**Function**

Required for cytochrome c complex (COX) IV assembly and function Protects COX assembly from oxidation-induced degradation, COX being the terminal component of the mitochondrial respiratory chain.

Cellular Location

Mitochondrion inner membrane; Peripheral membrane protein; Matrix side

Tissue Location

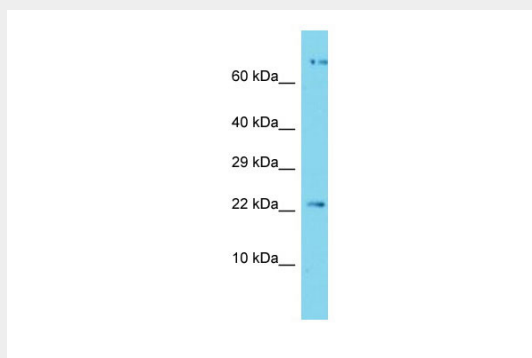
Expressed in fibroblasts.

APOPT1 Antibody - C-terminal region - Protocols

Provided below are standard protocols that you may find useful for product applications.

- [Western Blot](#)
- [Blocking Peptides](#)
- [Dot Blot](#)
- [Immunohistochemistry](#)
- [Immunofluorescence](#)
- [Immunoprecipitation](#)
- [Flow Cytometry](#)
- [Cell Culture](#)

APOPT1 Antibody - C-terminal region - Images



Host: Rabbit

Target Name: APOPT1

Sample Tissue: Jurkat Whole cell lysate

s

Antibody Dilution: 1.0µg/ml

APOPT1 Antibody - C-terminal region - References

- Heilig R., et al. Nature 421:601-607(2003).
Wang A.G., et al. Biochem. Biophys. Res. Commun. 345:1022-1032(2006).
Suzuki Y., et al. Submitted (APR-2005) to the EMBL/GenBank/DDBJ databases.