

METRNL Antibody - C-terminal region
Rabbit Polyclonal Antibody
Catalog # AI15757**Specification**

METRNL Antibody - C-terminal region - Product Information

Application	WB
Primary Accession	Q641Q3
Other Accession	NM_001004431 , NP_001004431
Reactivity	Human, Mouse, Rat, Rabbit, Horse, Yeast, Bovine, Guinea Pig, Dog
Predicted	Human, Mouse, Rat, Rabbit, Pig, Horse, Yeast, Bovine, Guinea Pig, Dog
Host	Rabbit
Clonality	Polyclonal
Calculated MW	29kDa KDa

METRNL Antibody - C-terminal region - Additional Information**Gene ID** 284207**Other Names**

Meteorin-like protein, Subfatin, METRNL

Format

Liquid. Purified antibody supplied in 1x PBS buffer with 0.09% (w/v) sodium azide and 2% sucrose.

Reconstitution & Storage

Add 50 ul of distilled water. Final anti-METRNL antibody concentration is 1 mg/ml in PBS buffer with 2% sucrose. For longer periods of storage, store at 20°C. Avoid repeat freeze-thaw cycles.

Precautions

METRNL Antibody - C-terminal region is for research use only and not for use in diagnostic or therapeutic procedures.

METRNL Antibody - C-terminal region - Protein Information**Name** METRNL**Function**

Hormone induced following exercise or cold exposure that promotes energy expenditure. Induced either in the skeletal muscle after exercise or in adipose tissue following cold exposure and is present in the circulation. Able to stimulate energy expenditure associated with the browning of the white fat depots and improves glucose tolerance. Does not promote an increase in a thermogenic gene program via direct action on adipocytes, but acts by stimulating several immune cell subtypes to enter the adipose tissue and activate their prothermogenic actions. Stimulates an eosinophil-dependent increase in IL4 expression and promotes alternative activation of adipose tissue macrophages, which are required for the increased expression of the

thermogenic and anti-inflammatory gene programs in fat. Required for some cold-induced thermogenic responses, suggesting a role in metabolic adaptations to cold temperatures (By similarity).

Cellular Location

Secreted.

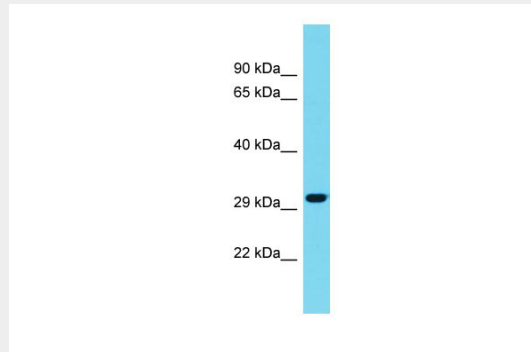
Tissue Location

Highly expressed in the skeletal muscle, in subcutaneous adipose tissue, epididymal white adipose tissue depots and heart. Also expressed in brown adipose tissues and kidney

METRNL Antibody - C-terminal region - Protocols

Provided below are standard protocols that you may find useful for product applications.

- [Western Blot](#)
- [Blocking Peptides](#)
- [Dot Blot](#)
- [Immunohistochemistry](#)
- [Immunofluorescence](#)
- [Immunoprecipitation](#)
- [Flow Cytometry](#)
- [Cell Culture](#)

METRNL Antibody - C-terminal region - Images

Host: Rabbit

Target Name: METRNL

Sample Tissue: Fetal Liver lysates

Antibody Dilution: 1.0µg/ml

METRNL Antibody - C-terminal region - References

Ota T.,et al.Nat. Genet. 36:40-45(2004).
Zody M.C.,et al.Nature 440:1045-1049(2006).
Rao R.R.,et al.Cell 157:1279-1291(2014).
Li Z.Y.,et al.CNS Neurosci. Ther. 20:344-354(2014).