

DRAXIN Antibody - C-terminal region
Rabbit Polyclonal Antibody
Catalog # AI15765**Specification**

DRAXIN Antibody - C-terminal region - Product Information

Application	WB
Primary Accession	Q8NBI3
Other Accession	NM_198545NP_940947
Reactivity	Human, Pig, Horse, Bovine, Dog
Predicted	Human, Pig, Horse, Bovine, Dog
Host	Rabbit
Clonality	Polyclonal
Calculated MW	36kDa KDa

DRAXIN Antibody - C-terminal region - Additional Information**Gene ID** 374946**Alias Symbol** AGPA3119, UNQ3119, neucrin**Other Names**

Draxin {ECO:0000255|HAMAP-Rule:MF_03060}, Dorsal inhibitory axon guidance protein
{ECO:0000255|HAMAP-Rule:MF_03060}, Dorsal repulsive axon guidance protein
{ECO:0000255|HAMAP-Rule:MF_03060}, Neucrin, DRAXIN
{ECO:0000255|HAMAP-Rule:MF_03060}, C1orf187

Format

Liquid. Purified antibody supplied in 1x PBS buffer with 0.09% (w/v) sodium azide and 2% sucrose.

Reconstitution & Storage

Add 50 ul of distilled water. Final anti-DRAXIN antibody concentration is 1 mg/ml in PBS buffer with 2% sucrose. For longer periods of storage, store at 20°C. Avoid repeat freeze-thaw cycles.

Precautions

DRAXIN Antibody - C-terminal region is for research use only and not for use in diagnostic or therapeutic procedures.

DRAXIN Antibody - C-terminal region - Protein Information**Name** DRAXIN {ECO:0000255|HAMAP-Rule:MF_03060}**Synonyms** C1orf187**Function**

Chemorepulsive axon guidance protein required for the development of spinal cord and forebrain commissures. Acts as a chemorepulsive guidance protein for commissural axons during development. Able to inhibit or repel neurite outgrowth from dorsal spinal cord. Inhibits the stabilization of cytosolic beta-catenin (CTNNB1) via its interaction with LRP6, thereby acting as an

antagonist of Wnt signaling pathway.

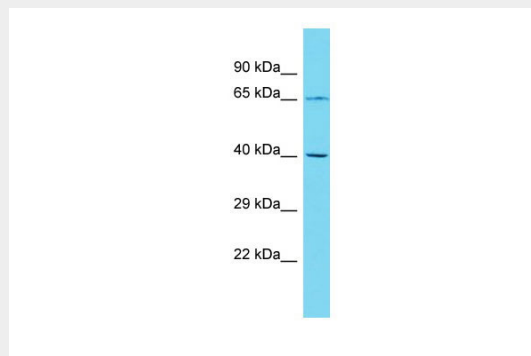
Cellular Location
Secreted.

DRAXIN Antibody - C-terminal region - Protocols

Provided below are standard protocols that you may find useful for product applications.

- [Western Blot](#)
- [Blocking Peptides](#)
- [Dot Blot](#)
- [Immunohistochemistry](#)
- [Immunofluorescence](#)
- [Immunoprecipitation](#)
- [Flow Cytometry](#)
- [Cell Culture](#)

DRAXIN Antibody - C-terminal region - Images



Host: Rabbit
Target Name: DRAXIN
Sample Tissue: 721_B Whole cell lysate
s
Antibody Dilution: 1.0µg/ml

DRAXIN Antibody - C-terminal region - Background

Chemorepulsive axon guidance protein required for the development of spinal cord and forebrain commissures. Acts as a chemorepulsive guidance protein for commissural axons during development. Able to inhibit or repel neurite outgrowth from dorsal spinal cord. Inhibits the stabilization of cytosolic beta- catenin (CTNNB1) via its interaction with LRP6, thereby acting as an antagonist of Wnt signaling pathway.

DRAXIN Antibody - C-terminal region - References

Miyake A.,et al.Biochem. Biophys. Res. Commun. 390:1051-1055(2009).
Clark H.F.,et al.Genome Res. 13:2265-2270(2003).
Otsuki T.,et al.DNA Res. 12:117-126(2005).
Gregory S.G.,et al.Nature 441:315-321(2006).
Zhang Z.,et al.Protein Sci. 13:2819-2824(2004).