

DCAF8 Antibody - C-terminal region
Rabbit Polyclonal Antibody
Catalog # AI15801**Specification**

DCAF8 Antibody - C-terminal region - Product Information

Application	WB
Primary Accession	Q5TAQ9
Other Accession	NM_015726 , NP_056541
Reactivity	Human, Mouse, Rat, Rabbit, Pig, Horse, Bovine, Guinea Pig, Dog
Predicted	Human, Mouse, Rat, Rabbit, Pig, Horse, Bovine, Guinea Pig, Dog
Host	Rabbit
Clonality	Polyclonal
Calculated MW	67kDa KDa

DCAF8 Antibody - C-terminal region - Additional Information**Gene ID** 50717**Alias Symbol** H326, WDR42A**Other Names**

DDB1- and CUL4-associated factor 8, WD repeat-containing protein 42A, DCAF8, H326, WDR42A

Format

Liquid. Purified antibody supplied in 1x PBS buffer with 0.09% (w/v) sodium azide and 2% sucrose.

Reconstitution & Storage

Add 50 ul of distilled water. Final anti-DCAF8 antibody concentration is 1 mg/ml in PBS buffer with 2% sucrose. For longer periods of storage, store at 20°C. Avoid repeat freeze-thaw cycles.

Precautions

DCAF8 Antibody - C-terminal region is for research use only and not for use in diagnostic or therapeutic procedures.

DCAF8 Antibody - C-terminal region - Protein Information**Name** DCAF8**Synonyms** H326, WDR42A**Function**

May function as a substrate receptor for CUL4-DDB1 E3 ubiquitin-protein ligase complex.

Cellular Location

Nucleus. Cytoplasm. Note=It shuttles between the nucleus and the cytoplasm. Nuclear import is mediated by KPNA1 and KPNB1 under the regulation of nuclear GTPase RAN. Nuclear export to the

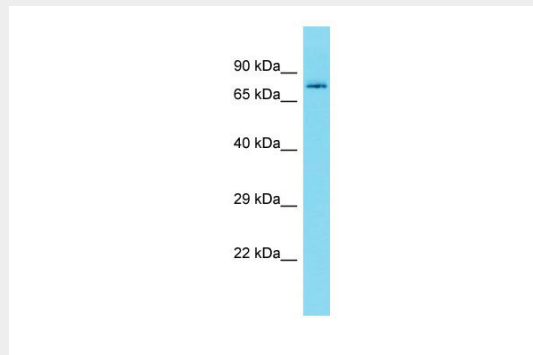
cytoplasm is XPO1 dependent.

DCAF8 Antibody - C-terminal region - Protocols

Provided below are standard protocols that you may find useful for product applications.

- [Western Blot](#)
- [Blocking Peptides](#)
- [Dot Blot](#)
- [Immunohistochemistry](#)
- [Immunofluorescence](#)
- [Immunoprecipitation](#)
- [Flow Cytometry](#)
- [Cell Culture](#)

DCAF8 Antibody - C-terminal region - Images



Host: Rabbit

Target Name: DCAF8

Sample Tissue: 721_B Whole cell lysate

s

Antibody Dilution: 1.0µg/ml DCAF8 is strongly supported by BioGPS gene expression data to be expressed in Human 721_B cells

DCAF8 Antibody - C-terminal region - Background

May function as a substrate receptor for CUL4-DDB1 E3 ubiquitin-protein ligase complex.

DCAF8 Antibody - C-terminal region - References

Bergsagel P.L., et al. Submitted (FEB-1994) to the EMBL/GenBank/DDBJ databases.

Totoki Y., et al. Submitted (APR-2005) to the EMBL/GenBank/DDBJ databases.

Bechtel S., et al. BMC Genomics 8:399-399(2007).

Gregory S.G., et al. Nature 441:315-321(2006).

Mural R.J., et al. Submitted (SEP-2005) to the EMBL/GenBank/DDBJ databases.