

HIST1H2AE Antibody - N-terminal region
Rabbit Polyclonal Antibody
Catalog # AI15849**Specification**

HIST1H2AE Antibody - N-terminal region - Product Information

Application	WB
Primary Accession	P04908
Other Accession	NM_021052 , NP_066390
Reactivity	Human, Mouse, Rat, Rabbit, Pig, Horse, Bovine, Guinea Pig, Dog
Predicted	Human, Mouse, Rat, Rabbit, Pig, Horse, Bovine, Guinea Pig, Dog
Host	Rabbit
Clonality	Polyclonal
Calculated MW	14kDa KDa

HIST1H2AE Antibody - N-terminal region - Additional Information**Gene ID** 3012;8335**Alias Symbol** H2A.1, H2A.2, H2A/a, H2AFA**Other Names**

Histone H2A type 1-B/E, Histone H2A.2, Histone H2A/a, Histone H2A/m, HIST1H2AB, H2AFM

Format

Liquid. Purified antibody supplied in 1x PBS buffer with 0.09% (w/v) sodium azide and 2% sucrose.

Reconstitution & Storage

Add 50 ul of distilled water. Final anti-HIST1H2AE antibody concentration is 1 mg/ml in PBS buffer with 2% sucrose. For longer periods of storage, store at 20°C. Avoid repeat freeze-thaw cycles.

Precautions

HIST1H2AE Antibody - N-terminal region is for research use only and not for use in diagnostic or therapeutic procedures.

HIST1H2AE Antibody - N-terminal region - Protein Information**Name** H2AC4 ([HGNC:4734](#))**Function**

Core component of nucleosome. Nucleosomes wrap and compact DNA into chromatin, limiting DNA accessibility to the cellular machineries which require DNA as a template. Histones thereby play a central role in transcription regulation, DNA repair, DNA replication and chromosomal stability. DNA accessibility is regulated via a complex set of post-translational modifications of histones, also called histone code, and nucleosome remodeling.

Cellular Location

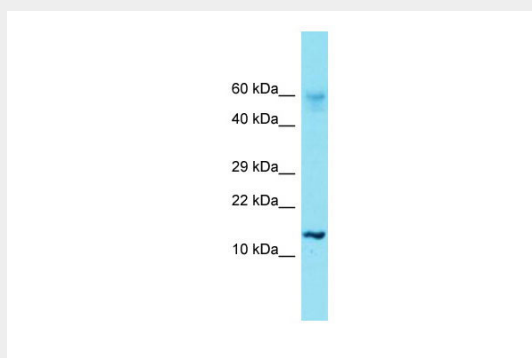
Nucleus. Chromosome.

HIST1H2AE Antibody - N-terminal region - Protocols

Provided below are standard protocols that you may find useful for product applications.

- [Western Blot](#)
- [Blocking Peptides](#)
- [Dot Blot](#)
- [Immunohistochemistry](#)
- [Immunofluorescence](#)
- [Immunoprecipitation](#)
- [Flow Cytometry](#)
- [Cell Culture](#)

HIST1H2AE Antibody - N-terminal region - Images



Host: Rabbit

Target Name: HIST1H2AE

Sample Tissue: RPMI-8226 Whole cell lysate

s

Antibody Dilution: 1.0µg/ml

HIST1H2AE Antibody - N-terminal region - Background

Core component of nucleosome. Nucleosomes wrap and compact DNA into chromatin, limiting DNA accessibility to the cellular machineries which require DNA as a template. Histones thereby play a central role in transcription regulation, DNA repair, DNA replication and chromosomal stability. DNA accessibility is regulated via a complex set of post-translational modifications of histones, also called histone code, and nucleosome remodeling.

HIST1H2AE Antibody - N-terminal region - References

Zhong R.,et al.Nucleic Acids Res. 11:7409-7425(1983).
Albig W.,et al.Genomics 10:940-948(1991).
Albig W.,et al.Hum. Genet. 101:284-294(1997).
Marzluff W.F.,et al.Genomics 80:487-498(2002).
Mungall A.J.,et al.Nature 425:805-811(2003).