

**KRT78 Antibody - middle region**  
**Rabbit Polyclonal Antibody**  
**Catalog # AI15870****Specification**

---

**KRT78 Antibody - middle region - Product Information**

Application	WB
Primary Accession	<a href="#">O8N1N4</a>
Other Accession	<a href="#">NM_173352</a> , <a href="#">NP_775487</a>
Reactivity	Human, Mouse, Rat, Rabbit, Pig, Bovine, Guinea Pig, Dog
Predicted	Human, Mouse, Rat, Rabbit, Pig, Bovine, Guinea Pig, Dog
Host	Rabbit
Clonality	Polyclonal
Calculated MW	57kDa kDa

**KRT78 Antibody - middle region - Additional Information****Gene ID** 196374**Alias Symbol** **K5B, Kb40****Other Names**

Keratin, type II cytoskeletal 78, Cytokeratin-78, CK-78, Keratin-5b, Keratin-78, K78, Type-II keratin Kb40, KRT78, K5B, KB40

**Format**

Liquid. Purified antibody supplied in 1x PBS buffer with 0.09% (w/v) sodium azide and 2% sucrose.

**Reconstitution & Storage**

Add 50 ul of distilled water. Final anti-KRT78 antibody concentration is 1 mg/ml in PBS buffer with 2% sucrose. For longer periods of storage, store at 20°C. Avoid repeat freeze-thaw cycles.

**Precautions**

KRT78 Antibody - middle region is for research use only and not for use in diagnostic or therapeutic procedures.

**KRT78 Antibody - middle region - Protein Information****Name** KRT78**Synonyms** K5B, KB40**Tissue Location**

In non-keratinising esophageal and vaginal epithelium, strongly expressed in the basal and parabasal/lower suprabasal cell layers with considerably decreased expression in the mid/upper suprabasal layers (at protein level) (PubMed:26340985). A similar gradient from basal to lower suprabasal layers is seen in the partially keratinised dorsal tongue epithelium, in the scalp and in

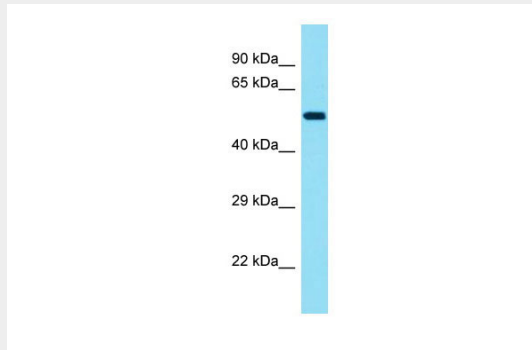
the plantar epidermis (at protein level) (PubMed:26340985). Extension of expression into the suprabasal compartments is distinctly more pronounced in non-keratinising epithelia than in keratinising epithelia and epidermis (at protein level) (PubMed:26340985). In scalp sections, present in the interfollicular epidermis and infundibulum including the entire outer root sheath of the hair follicles and also in the sebocytes (at protein level) (PubMed:26340985). In sweat glands, expressed in peripheral and luminal cells of the lower duct and in peripheral cells of the middle/upper duct with no expression observed in luminal cells (at protein level) (PubMed:26340985). In embryos at the 14th week of pregnancy, detected in basal and parabasal layers but is absent from the uppermost epidermal layer (at protein level) (PubMed:26340985). Expressed in tongue epithelium (PubMed:15737194)

### **KRT78 Antibody - middle region - Protocols**

Provided below are standard protocols that you may find useful for product applications.

- [Western Blot](#)
- [Blocking Peptides](#)
- [Dot Blot](#)
- [Immunohistochemistry](#)
- [Immunofluorescence](#)
- [Immunoprecipitation](#)
- [Flow Cytometry](#)
- [Cell Culture](#)

### **KRT78 Antibody - middle region - Images**



Host: Rabbit  
Target Name: KRT78  
Sample Tissue: HepG2 Whole cell lysate  
s  
Antibody Dilution: 1.0µg/ml

### **KRT78 Antibody - middle region - References**

Ota T.,et al.Nat. Genet. 36:40-45(2004).  
Bechtel S.,et al.BMC Genomics 8:399-399(2007).  
Scherer S.E.,et al.Nature 440:346-351(2006).  
Mural R.J.,et al.Submitted (JUL-2005) to the EMBL/GenBank/DDBJ databases.  
Hesse M.,et al.J. Cell Sci. 114:2569-2575(2001).