

**MCMBP Antibody - N-terminal region**  
**Rabbit Polyclonal Antibody**  
**Catalog # AI15881****Specification**

---

**MCMBP Antibody - N-terminal region - Product Information**

Application	WB
Primary Accession	<a href="#">Q9BTE3</a>
Other Accession	<a href="#">NM_024834</a> , <a href="#">NP_079110</a>
Reactivity	Human, Rat, Rabbit, Pig, Horse, Bovine, Guinea Pig, Dog
Predicted	Human, Rat, Rabbit, Pig, Horse, Bovine, Guinea Pig, Dog
Host	Rabbit
Clonality	Polyclonal
Calculated MW	72kDa KDa

**MCMBP Antibody - N-terminal region - Additional Information****Gene ID** 79892**Alias Symbol** C10orf119, MCM-BP**Other Names**

Mini-chromosome maintenance complex-binding protein, MCM-BP, MCM-binding protein, MCMBP, C10orf119

**Format**

Liquid. Purified antibody supplied in 1x PBS buffer with 0.09% (w/v) sodium azide and 2% sucrose.

**Reconstitution & Storage**

Add 50 ul of distilled water. Final anti-MCMBP antibody concentration is 1 mg/ml in PBS buffer with 2% sucrose. For longer periods of storage, store at 20°C. Avoid repeat freeze-thaw cycles.

**Precautions**

MCMBP Antibody - N-terminal region is for research use only and not for use in diagnostic or therapeutic procedures.

**MCMBP Antibody - N-terminal region - Protein Information****Name** MCMBP**Synonyms** C10orf119**Function**

Associated component of the MCM complex that acts as a regulator of DNA replication. Binds to the MCM complex during late S phase and promotes the disassembly of the MCM complex from chromatin, thereby acting as a key regulator of pre-replication complex (pre-RC) unloading from replicated DNA. Can dissociate the MCM complex without addition of ATP; probably acts by

destabilizing interactions of each individual subunits of the MCM complex. Required for sister chromatid cohesion.

#### Cellular Location

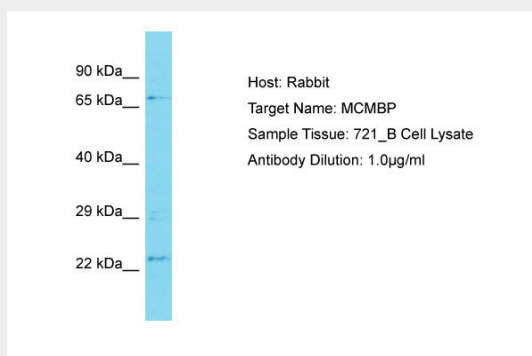
Nucleus. Note=Associates with chromatin. Highly associated with chromatin in G1/S and S phases, reduced binding to chromatin in G2, and further decreased binding in early M phase. It then reassociates with chromatin in late M phase. Dissociates from chromatin later than component of the MCM complex

#### MCMBP Antibody - N-terminal region - Protocols

Provided below are standard protocols that you may find useful for product applications.

- [Western Blot](#)
- [Blocking Peptides](#)
- [Dot Blot](#)
- [Immunohistochemistry](#)
- [Immunofluorescence](#)
- [Immunoprecipitation](#)
- [Flow Cytometry](#)
- [Cell Culture](#)

#### MCMBP Antibody - N-terminal region - Images



Host: Rabbit

Target Name: MCMBP

Sample Tissue: 721\_B Whole cell lysate

s

Antibody Dilution: 1.0µg/ml MCMBP is supported by BioGPS gene expression data to be expressed in 721\_B

#### MCMBP Antibody - N-terminal region - Background

Associated component of the MCM complex that acts as a regulator of DNA replication. Binds to the MCM complex during late S phase and promotes the disassembly of the MCM complex from chromatin, thereby acting as a key regulator of pre-replication complex (pre-RC) unloading from replicated DNA. Can dissociate the MCM complex without addition of ATP; probably acts by destabilizing interactions of each individual subunits of the MCM complex. Required for sister chromatid cohesion.

#### MCMBP Antibody - N-terminal region - References

Ota T., et al. Nat. Genet. 36:40-45(2004).

Ebert L.,et al.Submitted (JUN-2004) to the EMBL/GenBank/DDBJ databases.  
Deloukas P.,et al.Nature 429:375-381(2004).  
Sakwe A.M.,et al.Mol. Cell. Biol. 27:3044-3055(2007).  
Dephoure N.,et al.Proc. Natl. Acad. Sci. U.S.A. 105:10762-10767(2008).