

NSMCE4A Antibody - C-terminal region
Rabbit Polyclonal Antibody
Catalog # AI15899**Specification**

NSMCE4A Antibody - C-terminal region - Product Information

| | |
|-------------------|--|
| Application | WB, IF |
| Primary Accession | O9NXX6 |
| Other Accession | NM_017615 , NP_060085 |
| Reactivity | Human, Mouse, Rat, Rabbit, Horse, Bovine, Guinea Pig, Dog |
| Predicted | Human, Mouse, Rat, Rabbit, Pig, Horse, Bovine, Guinea Pig, Dog |
| Host | Rabbit |
| Clonality | Polyclonal |
| Calculated MW | 44kDa kDa |

NSMCE4A Antibody - C-terminal region - Additional Information**Gene ID** 54780**Alias Symbol** C10orf86, NS4EA, NSE4A**Other Names**

Non-structural maintenance of chromosomes element 4 homolog A, NS4EA, Non-SMC element 4 homolog A, NSMCE4A, C10orf86

Format

Liquid. Purified antibody supplied in 1x PBS buffer with 0.09% (w/v) sodium azide and 2% sucrose.

Reconstitution & Storage

Add 50 ul of distilled water. Final anti-NSMCE4A antibody concentration is 1 mg/ml in PBS buffer with 2% sucrose. For longer periods of storage, store at 20°C. Avoid repeat freeze-thaw cycles.

Precautions

NSMCE4A Antibody - C-terminal region is for research use only and not for use in diagnostic or therapeutic procedures.

NSMCE4A Antibody - C-terminal region - Protein Information**Name** NSMCE4A**Synonyms** C10orf86**Function**

Component of the SMC5-SMC6 complex, a complex involved in DNA double-strand breaks by homologous recombination. The complex may promote sister chromatid homologous recombination by recruiting the SMC1-SMC3 cohesin complex to double-strand breaks. The complex is required for telomere maintenance via recombination in ALT (alternative lengthening of

telomeres) cell lines and mediates sumoylation of shelterin complex (telosome) components which is proposed to lead to shelterin complex disassembly in ALT-associated PML bodies (APBs). Is involved in positive regulation of response to DNA damage stimulus.

Cellular Location

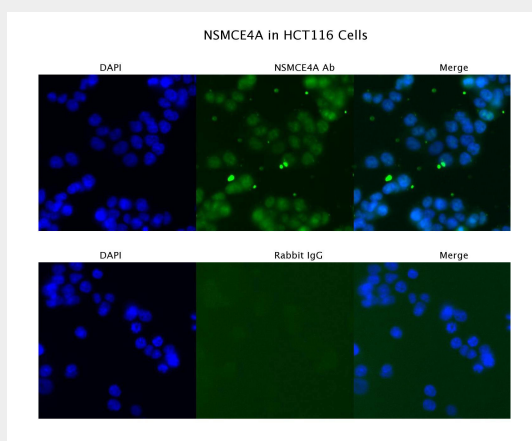
Nucleus. Chromosome, telomere

NSMCE4A Antibody - C-terminal region - Protocols

Provided below are standard protocols that you may find useful for product applications.

- [Western Blot](#)
- [Blocking Peptides](#)
- [Dot Blot](#)
- [Immunohistochemistry](#)
- [Immunofluorescence](#)
- [Immunoprecipitation](#)
- [Flow Cytometry](#)
- [Cell Culture](#)

NSMCE4A Antibody - C-terminal region - Images



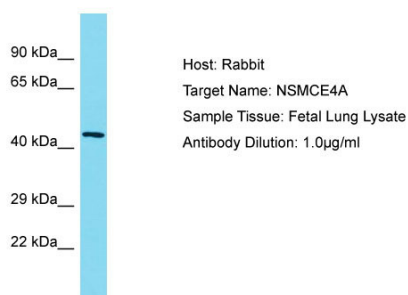
Sample Type : HCT116

Primary Antibody Dilution: 4 µg/ml

Secondary Antibody : Anti-rabbit Alexa 546

Secondary Antibody Dilution: 2 µg/ml

Gene Name : NSMCE4A



Host: Rabbit
Target Name: NSMCE4A
Sample Tissue: Fetal Lung lysates
Antibody Dilution: 1.0µg/ml

NSMCE4A Antibody - C-terminal region - Background

Component of the SMC5-SMC6 complex, a complex involved in DNA double-strand breaks by homologous recombination. The complex may promote sister chromatid homologous recombination by recruiting the SMC1-SMC3 cohesin complex to double-strand breaks. The complex is required for telomere maintenance via recombination in ALT (alternative lengthening of telomeres) cell lines and mediates sumoylation of shelterin complex (telosome) components which is proposed to lead to shelterin complex disassembly in ALT- associated PML bodies (APBs). Is involved in positive regulation of response to DNA damage stimulus.

NSMCE4A Antibody - C-terminal region - References

Ota T.,et al.Nat. Genet. 36:40-45(2004).
Suzuki Y.,et al.Submitted (APR-2005) to the EMBL/GenBank/DDBJ databases.
Deloukas P.,et al.Nature 429:375-381(2004).
Wan D.,et al.Proc. Natl. Acad. Sci. U.S.A. 101:15724-15729(2004).
Matsuoka S.,et al.Science 316:1160-1166(2007).