

OR2L2 Antibody - C-terminal region
Rabbit Polyclonal Antibody
Catalog # AI15906

Specification

OR2L2 Antibody - C-terminal region - Product Information

Application	WB
Primary Accession	Q8NH16
Other Accession	NM_001004686 , NP_001004686
Reactivity	Human, Mouse, Rat, Rabbit, Horse, Bovine, Guinea Pig, Dog
Predicted	Human, Mouse, Rat, Rabbit, Pig, Horse, Bovine, Guinea Pig, Dog
Host	Rabbit
Clonality	Polyclonal
Calculated MW	35kDa KDa

OR2L2 Antibody - C-terminal region - Additional Information

Gene ID 26246

Alias Symbol HSHTPCRH07, HTPCRH07, OR1-48, OR2L12, OR2L4P

Other Names

Olfactory receptor 2L2, HTPCRH07, Olfactory receptor 2L12, Olfactory receptor 2L4, OR2L2, OR2L12, OR2L4P

Format

Liquid. Purified antibody supplied in 1x PBS buffer with 0.09% (w/v) sodium azide and 2% sucrose.

Reconstitution & Storage

Add 50 ul of distilled water. Final anti-OR2L2 antibody concentration is 1 mg/ml in PBS buffer with 2% sucrose. For longer periods of storage, store at 20°C. Avoid repeat freeze-thaw cycles.

Precautions

OR2L2 Antibody - C-terminal region is for research use only and not for use in diagnostic or therapeutic procedures.

OR2L2 Antibody - C-terminal region - Protein Information

Name OR2L2

Synonyms OR2L12, OR2L4P

Function

Odorant receptor.

Cellular Location

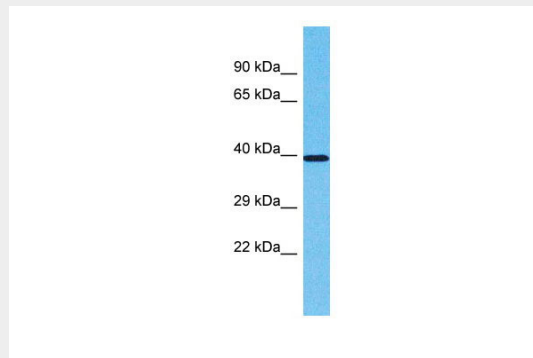
Cell membrane; Multi-pass membrane protein.

OR2L2 Antibody - C-terminal region - Protocols

Provided below are standard protocols that you may find useful for product applications.

- [Western Blot](#)
- [Blocking Peptides](#)
- [Dot Blot](#)
- [Immunohistochemistry](#)
- [Immunofluorescence](#)
- [Immunoprecipitation](#)
- [Flow Cytometry](#)
- [Cell Culture](#)

OR2L2 Antibody - C-terminal region - Images



Host: Rabbit
Target Name: OR2L2
Sample Tissue: Hela Whole cell lysate
s
Antibody Dilution: 1.0µg/ml

OR2L2 Antibody - C-terminal region - Background

Odorant receptor.

OR2L2 Antibody - C-terminal region - References

Suwa M., et al. Submitted (JUL-2001) to the EMBL/GenBank/DDBJ databases.
Parmentier M., et al. Nature 355:453-455(1992).