

**OR5B12 Antibody - C-terminal region**  
**Rabbit Polyclonal Antibody**  
**Catalog # AI15919**

**Specification**

---

**OR5B12 Antibody - C-terminal region - Product Information**

Application	WB
Primary Accession	<a href="#">O96R08</a>
Other Accession	<a href="#">NM_001004733</a> , <a href="#">NP_001004733</a>
Reactivity	Human, Mouse, Rat, Rabbit, Pig, Horse, Bovine, Guinea Pig, Dog
Predicted	Human, Mouse, Rat, Rabbit, Pig, Horse, Bovine, Guinea Pig, Dog
Host	Rabbit
Clonality	Polyclonal
Calculated MW	35kDa KDa

**OR5B12 Antibody - C-terminal region - Additional Information**

**Gene ID** 390191

**Alias Symbol** **OR11-241, OR5B12P, OR5B16, OST743**

**Other Names**

Olfactory receptor 5B12, Olfactory receptor 5B16, Olfactory receptor OR11-241, OR5B12, OR5B12P, OR5B16

**Format**

Liquid. Purified antibody supplied in 1x PBS buffer with 0.09% (w/v) sodium azide and 2% sucrose.

**Reconstitution & Storage**

Add 50  $\mu$ l of distilled water. Final Anti-OR5B12 antibody concentration is 1 mg/ml in PBS buffer with 2% sucrose. For longer periods of storage, store at -20°C. Avoid repeat freeze-thaw cycles.

**Precautions**

OR5B12 Antibody - C-terminal region is for research use only and not for use in diagnostic or therapeutic procedures.

**OR5B12 Antibody - C-terminal region - Protein Information**

**Name** OR5B12

**Synonyms** OR5B12P, OR5B16

**Function**

Odorant receptor.

**Cellular Location**

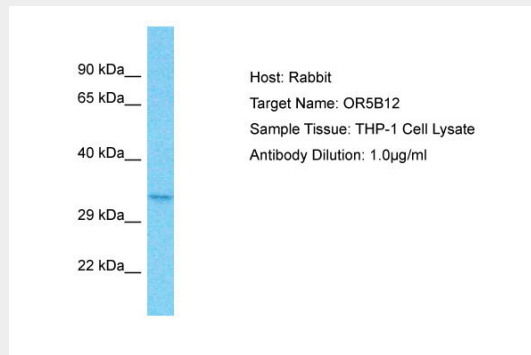
Cell membrane; Multi-pass membrane protein.

### OR5B12 Antibody - C-terminal region - Protocols

Provided below are standard protocols that you may find useful for product applications.

- [Western Blot](#)
- [Blocking Peptides](#)
- [Dot Blot](#)
- [Immunohistochemistry](#)
- [Immunofluorescence](#)
- [Immunoprecipitation](#)
- [Flow Cytometry](#)
- [Cell Culture](#)

### OR5B12 Antibody - C-terminal region - Images



Host: Rabbit  
Target Name: OR5B12  
Sample Tissue: THP-1 Whole cell lysate  
s  
Antibody Dilution: 1.0µg/ml

### OR5B12 Antibody - C-terminal region - Background

Odorant receptor.

### OR5B12 Antibody - C-terminal region - References

Suwa M., et al. Submitted (JUL-2001) to the EMBL/GenBank/DDBJ databases.  
Mural R.J., et al. Submitted (JUL-2005) to the EMBL/GenBank/DDBJ databases.  
Fuchs T., et al. Genomics 80:295-302(2002).  
Malnic B., et al. Proc. Natl. Acad. Sci. U.S.A. 101:2584-2589(2004).  
Malnic B., et al. Proc. Natl. Acad. Sci. U.S.A. 101:7205-7205(2004).