

OR10K2 Antibody - C-terminal region
Rabbit Polyclonal Antibody
Catalog # AI15941**Specification**

OR10K2 Antibody - C-terminal region - Product Information

Application	WB
Primary Accession	Q6IF99
Other Accession	NM_001004476 , NP_001004476
Reactivity	Human, Mouse, Rat, Rabbit, Pig, Horse, Bovine, Guinea Pig, Dog
Predicted	Human, Mouse, Rat, Rabbit, Pig, Horse, Bovine, Guinea Pig, Dog
Host	Rabbit
Clonality	Polyclonal
Calculated MW	34kDa KDa

OR10K2 Antibody - C-terminal region - Additional Information**Gene ID** 391107**Alias Symbol** **OR1-4****Other Names**

Olfactory receptor 10K2, Olfactory receptor OR1-4, OR10K2

Format

Liquid. Purified antibody supplied in 1x PBS buffer with 0.09% (w/v) sodium azide and 2% sucrose.

Reconstitution & StorageAdd 50 μ l of distilled water. Final Anti-OR10K2 antibody concentration is 1 mg/ml in PBS buffer with 2% sucrose. For longer periods of storage, store at -20°C. Avoid repeat freeze-thaw cycles.**Precautions**

OR10K2 Antibody - C-terminal region is for research use only and not for use in diagnostic or therapeutic procedures.

OR10K2 Antibody - C-terminal region - Protein Information**Name** OR10K2**Function**

Odorant receptor.

Cellular Location

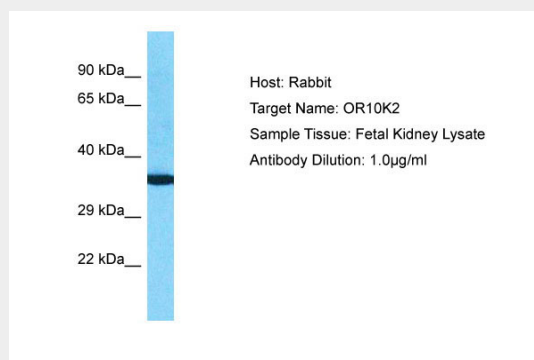
Cell membrane; Multi-pass membrane protein.

OR10K2 Antibody - C-terminal region - Protocols

Provided below are standard protocols that you may find useful for product applications.

- [Western Blot](#)
- [Blocking Peptides](#)
- [Dot Blot](#)
- [Immunohistochemistry](#)
- [Immunofluorescence](#)
- [Immunoprecipitation](#)
- [Flow Cytometry](#)
- [Cell Culture](#)

OR10K2 Antibody - C-terminal region - Images



Host: Rabbit
Target Name: OR10K2
Sample Tissue: Fetal Kidney lysates
Antibody Dilution: 1.0µg/ml

OR10K2 Antibody - C-terminal region - Background

Odorant receptor.

OR10K2 Antibody - C-terminal region - References

Gregory S.G., et al. Nature 441:315-321(2006).
Malnic B., et al. Proc. Natl. Acad. Sci. U.S.A. 101:2584-2589(2004).
Malnic B., et al. Proc. Natl. Acad. Sci. U.S.A. 101:7205-7205(2004).