

**PMPCA Antibody - C-terminal region**  
**Rabbit Polyclonal Antibody**  
**Catalog # AI15953**

**Specification**

---

**PMPCA Antibody - C-terminal region - Product Information**

Application	WB
Primary Accession	<a href="#">Q10713</a>
Other Accession	<a href="#">NM_015160</a> , <a href="#">NP_055975</a>
Reactivity	Human, Mouse, Rat, Horse, Bovine, Guinea Pig, Dog
Predicted	Human, Mouse, Rat, Pig, Horse, Bovine, Guinea Pig, Dog
Host	Rabbit
Clonality	Polyclonal
Calculated MW	54kDa kDa

**PMPCA Antibody - C-terminal region - Additional Information**

**Gene ID** 23203

**Alias Symbol** Alpha-MPP, INPP5E

**Other Names**

Mitochondrial-processing peptidase subunit alpha, 3.4.24.64, Alpha-MPP, P-55, PMPCA, INPP5E, KIAA0123, MPPA

**Format**

Liquid. Purified antibody supplied in 1x PBS buffer with 0.09% (w/v) sodium azide and 2% sucrose.

**Reconstitution & Storage**

Add 50  $\mu$ l of distilled water. Final Anti-PMPCA antibody concentration is 1 mg/ml in PBS buffer with 2% sucrose. For longer periods of storage, store at -20°C. Avoid repeat freeze-thaw cycles.

**Precautions**

PMPCA Antibody - C-terminal region is for research use only and not for use in diagnostic or therapeutic procedures.

**PMPCA Antibody - C-terminal region - Protein Information**

**Name** PMPCA

**Synonyms** INPP5E, KIAA0123, MPPA

**Function**

Substrate recognition and binding subunit of the essential mitochondrial processing protease (MPP), which cleaves the mitochondrial sequence off newly imported precursor proteins.

**Cellular Location**

Mitochondrion matrix {ECO:0000250|UniProtKB:P20069}. Mitochondrion inner membrane

#### Tissue Location

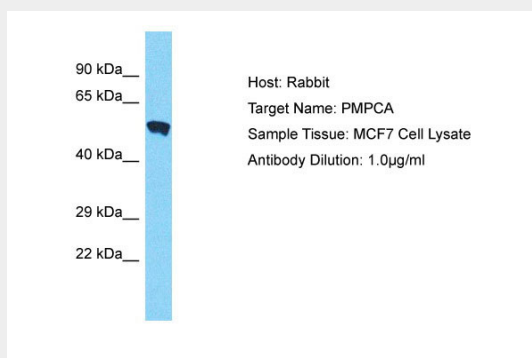
Ubiquitously expressed with highest expression in fetal tissues and adult brain, cerebellum and cerebellar vermis

#### PMPCA Antibody - C-terminal region - Protocols

Provided below are standard protocols that you may find useful for product applications.

- [Western Blot](#)
- [Blocking Peptides](#)
- [Dot Blot](#)
- [Immunohistochemistry](#)
- [Immunofluorescence](#)
- [Immunoprecipitation](#)
- [Flow Cytometry](#)
- [Cell Culture](#)

#### PMPCA Antibody - C-terminal region - Images



Host: Rabbit

Target Name: PMPCA

Sample Tissue: MCF7 Whole cell lysate

s

Antibody Dilution: 1.0µg/ml PMPCA is supported by BioGPS gene expression data to be expressed in MCF7

#### PMPCA Antibody - C-terminal region - Background

Cleaves presequences (transit peptides) from mitochondrial protein precursors.

#### PMPCA Antibody - C-terminal region - References

Nagase T., et al. DNA Res. 2:37-43(1995).

Nagase T., et al. DNA Res. 2:167-174(1995).

Ota T., et al. Nat. Genet. 36:40-45(2004).

Humphray S.J., et al. Nature 429:369-374(2004).

Mural R.J., et al. Submitted (JUL-2005) to the EMBL/GenBank/DDBJ databases.