

SLC38A8 Antibody - C-terminal region
Rabbit Polyclonal Antibody
Catalog # AI15970**Specification**

SLC38A8 Antibody - C-terminal region - Product Information

Application	WB
Primary Accession	A6NNN8
Other Accession	NM_001080442 , NP_001073911
Reactivity	Human, Mouse, Rat, Rabbit, Horse, Bovine, Guinea Pig, Dog
Predicted	Human, Mouse, Rat, Rabbit, Pig, Horse, Bovine, Guinea Pig, Dog
Host	Rabbit
Clonality	Polyclonal
Calculated MW	47kDa KDa

SLC38A8 Antibody - C-terminal region - Additional Information**Gene ID** 146167**Other Names**

Putative sodium-coupled neutral amino acid transporter 8, Solute carrier family 38 member 8, SLC38A8

Format

Liquid. Purified antibody supplied in 1x PBS buffer with 0.09% (w/v) sodium azide and 2% sucrose.

Reconstitution & StorageAdd 50 μ l of distilled water. Final Anti-SLC38A8 antibody concentration is 1 mg/ml in PBS buffer with 2% sucrose. For longer periods of storage, store at -20°C. Avoid repeat freeze-thaw cycles.**Precautions**

SLC38A8 Antibody - C-terminal region is for research use only and not for use in diagnostic or therapeutic procedures.

SLC38A8 Antibody - C-terminal region - Protein Information**Name** SLC38A8 {ECO:0000250|UniProtKB:Q5HZH7, ECO:0000312|HGNC:HGNC:32434}**Function**

Electrogenic sodium-dependent amino acid transporter with a preference for L-glutamine, L-alanine, L-histidine, L-aspartate and L-arginine. May facilitate glutamine uptake in both excitatory and inhibitory neurons. The transport mechanism and stoichiometry remain to be elucidated.

Cellular Location

Membrane {ECO:0000250|UniProtKB:Q5HZH7}; Multi-pass membrane protein. Cytoplasm, cell cortex {ECO:0000250|UniProtKB:Q5HZH7}. Cell projection, axon {ECO:0000250|UniProtKB:Q5HZH7}

Tissue Location

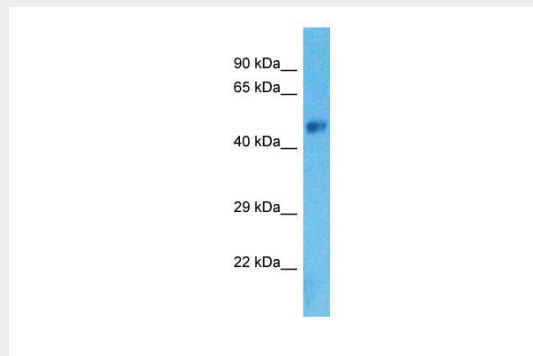
Expressed in fetal and adult brain, and spinal cord. In the brain, it is localized in the cell body and axon of the majority of neuronal cells and in a subset of glial cells. Found throughout the neuronal retina, with higher expression levels in the inner and outer plexiform layers and the photoreceptor layer. Very weak expression is also present in the kidneys, thymus, and testes

SLC38A8 Antibody - C-terminal region - Protocols

Provided below are standard protocols that you may find useful for product applications.

- [Western Blot](#)
- [Blocking Peptides](#)
- [Dot Blot](#)
- [Immunohistochemistry](#)
- [Immunofluorescence](#)
- [Immunoprecipitation](#)
- [Flow Cytometry](#)
- [Cell Culture](#)

SLC38A8 Antibody - C-terminal region - Images



Host: Rabbit
Target Name: SLC38A8
Sample Tissue: Fetal Brain lysates
Antibody Dilution: 1.0µg/ml

SLC38A8 Antibody - C-terminal region - Background

Putative sodium-dependent amino acid/proton antiporter.

SLC38A8 Antibody - C-terminal region - References

Martin J., et al. Nature 432:988-994(2004).
Poulter J.A., et al. Am. J. Hum. Genet. 93:1143-1150(2013).
Perez Y., et al. Eur. J. Hum. Genet. 22:703-706(2014).