

TBKBP1 Antibody - N-terminal region
Rabbit Polyclonal Antibody
Catalog # AI15978

Specification

TBKBP1 Antibody - N-terminal region - Product Information

Application	WB
Primary Accession	D3DTT5
Reactivity	Human, Mouse, Rat, Rabbit, Pig, Horse, Bovine, Dog
Predicted	Human, Mouse, Rat, Rabbit, Pig, Horse, Bovine, Dog
Host	Rabbit
Clonality	Polyclonal
Calculated MW	50kDa KDa

TBKBP1 Antibody - N-terminal region - Additional Information

Format

Liquid. Purified antibody supplied in 1x PBS buffer with 0.09% (w/v) sodium azide and 2% sucrose.

Reconstitution & Storage

Add 50 μ l of distilled water. Final Anti-TBKBP1 antibody concentration is 1 mg/ml in PBS buffer with 2% sucrose. For longer periods of storage, store at -20°C. Avoid repeat freeze-thaw cycles.

Precautions

TBKBP1 Antibody - N-terminal region is for research use only and not for use in diagnostic or therapeutic procedures.

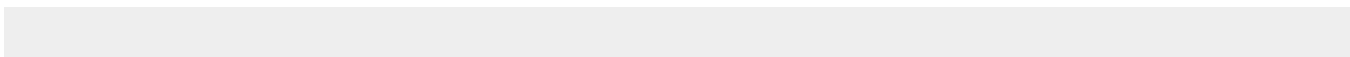
TBKBP1 Antibody - N-terminal region - Protein Information

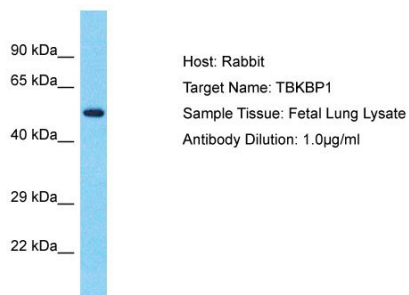
TBKBP1 Antibody - N-terminal region - Protocols

Provided below are standard protocols that you may find useful for product applications.

- [Western Blot](#)
- [Blocking Peptides](#)
- [Dot Blot](#)
- [Immunohistochemistry](#)
- [Immunofluorescence](#)
- [Immunoprecipitation](#)
- [Flow Cytometry](#)
- [Cell Culture](#)

TBKBP1 Antibody - N-terminal region - Images





Host: Rabbit
Target Name: TBKBP1
Sample Tissue: Fetal Lung lysates
Antibody Dilution: 1.0µg/ml