

TIMM10 Antibody - middle region
Rabbit Polyclonal Antibody
Catalog # AI15981**Specification**

TIMM10 Antibody - middle region - Product Information

Application	WB
Primary Accession	P62072
Other Accession	NM_012456 , NP_036588
Reactivity	Human, Mouse, Rat, Rabbit, Horse, Bovine, Guinea Pig, Dog
Predicted	Human, Mouse, Rat, Rabbit, Pig, Horse, Bovine, Guinea Pig, Dog
Host	Rabbit
Clonality	Polyclonal
Calculated MW	9kDa KDa

TIMM10 Antibody - middle region - Additional Information**Gene ID** 26519**Alias Symbol** **TIM10, TIM10A****Other Names**

Mitochondrial import inner membrane translocase subunit Tim10, TIMM10, TIM10

Format

Liquid. Purified antibody supplied in 1x PBS buffer with 0.09% (w/v) sodium azide and 2% sucrose.

Reconstitution & StorageAdd 50 μ l of distilled water. Final Anti-TIMM10 antibody concentration is 1 mg/ml in PBS buffer with 2% sucrose. For longer periods of storage, store at -20°C. Avoid repeat freeze-thaw cycles.**Precautions**

TIMM10 Antibody - middle region is for research use only and not for use in diagnostic or therapeutic procedures.

TIMM10 Antibody - middle region - Protein Information**Name** TIMM10**Synonyms** TIM10**Function**

Mitochondrial intermembrane chaperone that participates in the import and insertion of multi-pass transmembrane proteins into the mitochondrial inner membrane. May also be required for the transfer of beta-barrel precursors from the TOM complex to the sorting and assembly machinery (SAM complex) of the outer membrane. Acts as a chaperone-like protein that protects the hydrophobic precursors from aggregation and guide them through the mitochondrial

intermembrane space.

Cellular Location

Mitochondrion inner membrane; Peripheral membrane protein; Intermembrane side

Tissue Location

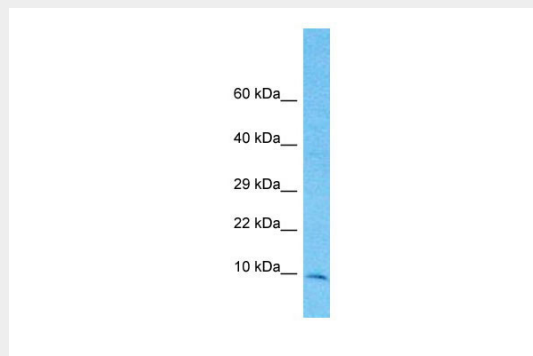
Ubiquitous, with highest expression in heart, kidney, liver and skeletal muscle.

TIMM10 Antibody - middle region - Protocols

Provided below are standard protocols that you may find useful for product applications.

- [Western Blot](#)
- [Blocking Peptides](#)
- [Dot Blot](#)
- [Immunohistochemistry](#)
- [Immunofluorescence](#)
- [Immunoprecipitation](#)
- [Flow Cytometry](#)
- [Cell Culture](#)

TIMM10 Antibody - middle region - Images



Host: Rabbit

Target Name: TIMM10

Sample Tissue: 721_B Whole cell lysate

s

Antibody Dilution: 1.0µg/mlTIMM10 is supported by BioGPS gene expression data to be expressed in 721_B

TIMM10 Antibody - middle region - Background

Mitochondrial intermembrane chaperone that participates in the import and insertion of multi-pass transmembrane proteins into the mitochondrial inner membrane. May also be required for the transfer of beta-barrel precursors from the TOM complex to the sorting and assembly machinery (SAM complex) of the outer membrane. Acts as a chaperone-like protein that protects the hydrophobic precursors from aggregation and guide them through the mitochondrial intermembrane space.

TIMM10 Antibody - middle region - References

Bauer M.F.,et al.FEBS Lett. 464:41-47(1999).

Jin H., et al. Genomics 61:259-267(1999).

Ota T., et al. Nat. Genet. 36:40-45(2004).

Mural R.J., et al. Submitted (JUL-2005) to the EMBL/GenBank/DDBJ databases.

Rothbauer U., et al. J. Biol. Chem. 276:37327-37334(2001).