

**LEG1 Antibody - N-terminal region**  
**Rabbit Polyclonal Antibody**  
**Catalog # AI16007**

**Specification**

---

**LEG1 Antibody - N-terminal region - Product Information**

Application	WB
Primary Accession	<a href="#">Q6P5S2</a>
Other Accession	<a href="#">NP_001010905</a>
Reactivity	Human, Rabbit, Pig, Bovine, Dog, Guinea Pig, Horse
Predicted	Human, Rabbit, Pig, Bovine, Dog, Guinea Pig, Horse
Host	Rabbit
Clonality	Polyclonal
Calculated MW	36kDa KDa

**LEG1 Antibody - N-terminal region - Additional Information**

**Gene ID** 352999

**Other Names**

UPF0762 protein C6orf58, C6orf58

**Format**

Liquid. Purified antibody supplied in 1x PBS buffer with 0.09% (w/v) sodium azide and 2% sucrose.

**Reconstitution & Storage**

Add 50  $\mu$ , l of distilled water. Final Anti-LEG1 antibody concentration is 1 mg/ml in PBS buffer with 2% sucrose. For longer periods of storage, store at -20°C. Avoid repeat freeze-thaw cycles.

**Precautions**

LEG1 Antibody - N-terminal region is for research use only and not for use in diagnostic or therapeutic procedures.

**LEG1 Antibody - N-terminal region - Protein Information**

**Name** LEG1 {ECO:0000250|UniProtKB:A5PF61, ECO:0000250|UniProtKB:Q4QRF7}

**Function**

May be involved in early liver development.

**Cellular Location**

Secreted {ECO:0000250|UniProtKB:A5PF61, ECO:0000250|UniProtKB:Q4QRF7}

**Tissue Location**

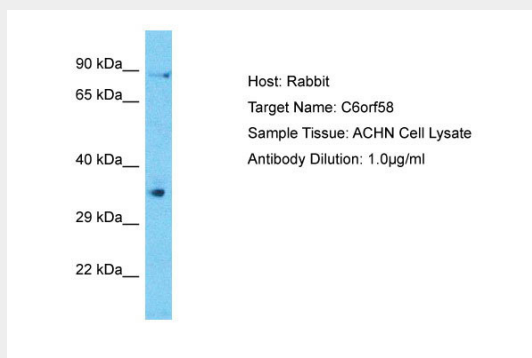
Detected in saliva and in hypomineralized dental enamel (at protein level).

## LEG1 Antibody - N-terminal region - Protocols

Provided below are standard protocols that you may find useful for product applications.

- [Western Blot](#)
- [Blocking Peptides](#)
- [Dot Blot](#)
- [Immunohistochemistry](#)
- [Immunofluorescence](#)
- [Immunoprecipitation](#)
- [Flow Cytometry](#)
- [Cell Culture](#)

## LEG1 Antibody - N-terminal region - Images



Host: Rabbit  
Target Name: LEG1  
Sample Tissue: ACHN Whole cell lysate  
s  
Antibody Dilution: 1.0µg/ml

## LEG1 Antibody - N-terminal region - References

Ota T., et al. Nat. Genet. 36:40-45(2004).  
Mungall A.J., et al. Nature 425:805-811(2003).  
Mural R.J., et al. Submitted (SEP-2005) to the EMBL/GenBank/DDBJ databases.  
Ramachandran P., et al. J. Proteome Res. 5:1493-1503(2006).