

MATK Antibody - C-terminal region
Rabbit Polyclonal Antibody
Catalog # AI16043**Specification**

MATK Antibody - C-terminal region - Product Information

Application	WB
Primary Accession	P42679
Other Accession	NP_647612
Reactivity	Human
Host	Rabbit
Clonality	Polyclonal
Calculated MW	55kDa KDa

MATK Antibody - C-terminal region - Additional Information**Gene ID** 4145**Alias Symbol** **MATK, CTK, HYL,****Other Names**

Megakaryocyte-associated tyrosine-protein kinase, 2.7.10.2, CSK homologous kinase, CHK, Hematopoietic consensus tyrosine-lacking kinase, Protein kinase HYL, Tyrosine-protein kinase CTK, MATK, CTK, HYL

Format

Liquid. Purified antibody supplied in 1x PBS buffer with 0.09% (w/v) sodium azide and 2% sucrose.

Reconstitution & Storage

Add 50 µl of distilled water. Final Anti-MATK antibody concentration is 1 mg/ml in PBS buffer with 2% sucrose. For longer periods of storage, store at -20°C. Avoid repeat freeze-thaw cycles.

Precautions

MATK Antibody - C-terminal region is for research use only and not for use in diagnostic or therapeutic procedures.

MATK Antibody - C-terminal region - Protein Information**Name** MATK**Synonyms** CTK, HYL**Function**

Could play a significant role in the signal transduction of hematopoietic cells. May regulate tyrosine kinase activity of SRC- family members in brain by specifically phosphorylating their C-terminal regulatory tyrosine residue which acts as a negative regulatory site. It may play an inhibitory role in the control of T- cell proliferation.

Cellular Location

Cytoplasm. Membrane. Note=In platelets, 90% of MATK localizes to the membrane fraction, and translocates to the cytoskeleton upon thrombin stimulation

Tissue Location

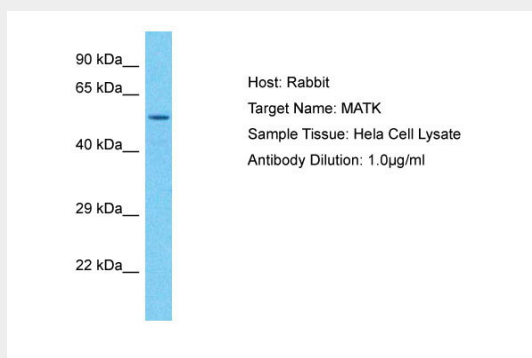
Expressed in various myeloid cell lines, detected in brain and lung

MATK Antibody - C-terminal region - Protocols

Provided below are standard protocols that you may find useful for product applications.

- [Western Blot](#)
- [Blocking Peptides](#)
- [Dot Blot](#)
- [Immunohistochemistry](#)
- [Immunofluorescence](#)
- [Immunoprecipitation](#)
- [Flow Cytometry](#)
- [Cell Culture](#)

MATK Antibody - C-terminal region - Images



Host: Rabbit
Target Name: MATK
Sample Tissue: Hela Whole cell lysate
s
Antibody Dilution: 1.0µg/ml

MATK Antibody - C-terminal region - Background

Could play a significant role in the signal transduction of hematopoietic cells. May regulate tyrosine kinase activity of SRC-family members in brain by specifically phosphorylating their C-terminal regulatory tyrosine residue which acts as a negative regulatory site. It may play an inhibitory role in the control of T-cell proliferation.

MATK Antibody - C-terminal region - References

Sakano S.,et al.Oncogene 9:1155-1161(1994).
Bennett B.D.,et al.J. Biol. Chem. 269:1068-1074(1994).
Avraham S.,et al.J. Biol. Chem. 270:1833-1842(1995).
Ota T.,et al.Nat. Genet. 36:40-45(2004).
Bechtel S.,et al.BMC Genomics 8:399-399(2007).