

SMARCAL1 Antibody - N-terminal region
Rabbit Polyclonal Antibody
Catalog # AI16065**Specification**

SMARCAL1 Antibody - N-terminal region - Product Information

Application	WB
Primary Accession	O9NZC9
Other Accession	XP_005246689
Reactivity	Human
Predicted	Human
Host	Rabbit
Clonality	Polyclonal
Calculated MW	104kDa KDa

SMARCAL1 Antibody - N-terminal region - Additional Information**Gene ID** 50485**Alias Symbol** **SMARCAL1, HARP,****Other Names**

SWI/SNF-related matrix-associated actin-dependent regulator of chromatin subfamily A-like protein 1, 3.6.4.-, HepA-related protein, hHARP, Sucrose nonfermenting protein 2-like 1, SMARCAL1, HARP

Format

Liquid. Purified antibody supplied in 1x PBS buffer with 0.09% (w/v) sodium azide and 2% sucrose.

Reconstitution & Storage

Add 50 µl of distilled water. Final Anti-SMARCAL1 antibody concentration is 1 mg/ml in PBS buffer with 2% sucrose. For longer periods of storage, store at -20°C. Avoid repeat freeze-thaw cycles.

Precautions

SMARCAL1 Antibody - N-terminal region is for research use only and not for use in diagnostic or therapeutic procedures.

SMARCAL1 Antibody - N-terminal region - Protein Information**Name** SMARCAL1**Synonyms** HARP**Function**

ATP-dependent annealing helicase that binds selectively to fork DNA relative to ssDNA or dsDNA and catalyzes the rewinding of the stably unwound DNA. Rewinds single-stranded DNA bubbles that are stably bound by replication protein A (RPA). Acts throughout the genome to reanneal stably unwound DNA, performing the opposite reaction of many enzymes, such as helicases and polymerases, that unwind DNA. May play an important role in DNA damage response by acting at

stalled replication forks.

Cellular Location

Nucleus. Note=Recruited to damaged DNA regions

Tissue Location

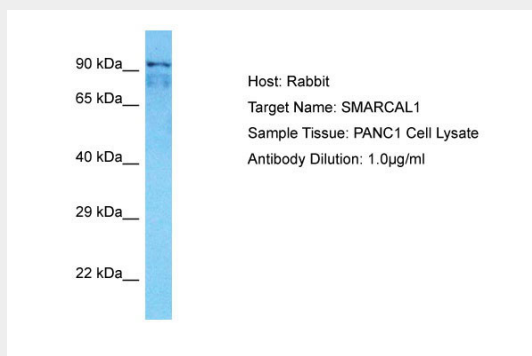
Ubiquitously expressed, with high levels in testis.

SMARCAL1 Antibody - N-terminal region - Protocols

Provided below are standard protocols that you may find useful for product applications.

- [Western Blot](#)
- [Blocking Peptides](#)
- [Dot Blot](#)
- [Immunohistochemistry](#)
- [Immunofluorescence](#)
- [Immunoprecipitation](#)
- [Flow Cytometry](#)
- [Cell Culture](#)

SMARCAL1 Antibody - N-terminal region - Images



Host: Rabbit
Target Name: SMARCAL1
Sample Tissue: PANC1 Whole cell lysate
s
Antibody Dilution: 1.0µg/ml

SMARCAL1 Antibody - N-terminal region - Background

ATP-dependent annealing helicase that binds selectively to fork DNA relative to ssDNA or dsDNA and catalyzes the rewinding of the stably unwound DNA. Rewinds single-stranded DNA bubbles that are stably bound by replication protein A (RPA). Acts throughout the genome to reanneal stably unwound DNA, performing the opposite reaction of many enzymes, such as helicases and polymerases, that unwind DNA. May play an important role in DNA damage response by acting at stalled replication forks.

SMARCAL1 Antibody - N-terminal region - References

Coleman M.A., et al. Genomics 65:274-282(2000).
Boerkoel C.F., et al. Nat. Genet. 30:215-220(2002).

Hillier L.W.,et al.Nature 434:724-731(2005).

Mural R.J.,et al.Submitted (JUL-2005) to the EMBL/GenBank/DDBJ databases.

Bechtel S.,et al.BMC Genomics 8:399-399(2007).