

**CXCR5 Antibody - N-terminal region**  
**Rabbit Polyclonal Antibody**  
**Catalog # AI16099****Specification**

---

**CXCR5 Antibody - N-terminal region - Product Information**

|                   |                        |
|-------------------|------------------------|
| Application       | <b>WB</b>              |
| Primary Accession | <a href="#">P32302</a> |
| Reactivity        | <b>Human</b>           |
| Host              | <b>Rabbit</b>          |
| Clonality         | <b>Polyclonal</b>      |
| Calculated MW     | <b>40kDa KDa</b>       |

**CXCR5 Antibody - N-terminal region - Additional Information****Gene ID** 643**Alias Symbol** **CXCR5, BLR1, MDR15,**  
**Other Names**C-X-C chemokine receptor type 5, CXC-R5, CXCR-5, Burkitt lymphoma receptor 1,  
Monocyte-derived receptor 15, MDR-15, CD185, CXCR5, BLR1, MDR15**Format**

Liquid. Purified antibody supplied in 1x PBS buffer with 0.09% (w/v) sodium azide and 2% sucrose.

**Reconstitution & Storage**Add 50  $\mu$ l of distilled water. Final Anti-CXCR5 antibody concentration is 1 mg/ml in PBS buffer with 2% sucrose. For longer periods of storage, store at -20°C. Avoid repeat freeze-thaw cycles.**Precautions**

CXCR5 Antibody - N-terminal region is for research use only and not for use in diagnostic or therapeutic procedures.

**CXCR5 Antibody - N-terminal region - Protein Information****Name** CXCR5**Synonyms** BLR1, MDR15**Function**

Cytokine receptor that binds to B-lymphocyte chemoattractant (BLC). Involved in B-cell migration into B-cell follicles of spleen and Peyer patches but not into those of mesenteric or peripheral lymph nodes. May have a regulatory function in Burkitt lymphoma (BL) lymphomagenesis and/or B-cell differentiation.

**Cellular Location**

Cell membrane; Multi-pass membrane protein.

### Tissue Location

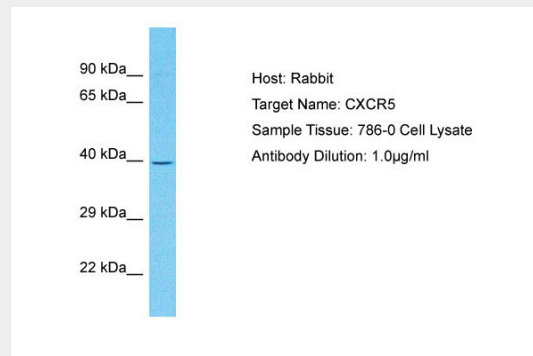
Expression in mature B-cells and Burkitt lymphoma cells

### CXCR5 Antibody - N-terminal region - Protocols

Provided below are standard protocols that you may find useful for product applications.

- [Western Blot](#)
- [Blocking Peptides](#)
- [Dot Blot](#)
- [Immunohistochemistry](#)
- [Immunofluorescence](#)
- [Immunoprecipitation](#)
- [Flow Cytometry](#)
- [Cell Culture](#)

### CXCR5 Antibody - N-terminal region - Images



Host: Rabbit  
Target Name: CXCR5  
Sample Tissue: 786-0 Whole cell lysate  
s  
Antibody Dilution: 1.0µg/ml

### CXCR5 Antibody - N-terminal region - Background

Cytokine receptor that binds to B-lymphocyte chemoattractant (BLC). Involved in B-cell migration into B-cell follicles of spleen and Peyer patches but not into those of mesenteric or peripheral lymph nodes. May have a regulatory function in Burkitt lymphoma (BL) lymphomagenesis and/or B-cell differentiation.

### CXCR5 Antibody - N-terminal region - References

Dobner T., et al. Eur. J. Immunol. 22:2795-2799(1992).  
Barella L., et al. Biochem. J. 309:773-779(1995).  
Legler D.F., et al. J. Exp. Med. 187:655-660(1998).  
Sjoeblom T., et al. Science 314:268-274(2006).