

CNGB3 Antibody - N-terminal region
Rabbit Polyclonal Antibody
Catalog # AI16105**Specification**

CNGB3 Antibody - N-terminal region - Product Information

| | |
|-------------------|---------------------------|
| Application | WB |
| Primary Accession | O9NQW8 |
| Other Accession | NP_061971 |
| Reactivity | Human |
| Host | Rabbit |
| Clonality | Polyclonal |
| Calculated MW | 88kDa KDa |

CNGB3 Antibody - N-terminal region - Additional Information**Gene ID** 54714**Alias Symbol** **CNGB3,**
Other Names

Cyclic nucleotide-gated cation channel beta-3, Cone photoreceptor cGMP-gated channel subunit beta, Cyclic nucleotide-gated cation channel modulatory subunit, Cyclic nucleotide-gated channel beta-3, CNG channel beta-3, CNGB3

Format

Liquid. Purified antibody supplied in 1x PBS buffer with 0.09% (w/v) sodium azide and 2% sucrose.

Reconstitution & Storage

Add 50 µl of distilled water. Final Anti-CNGB3 antibody concentration is 1 mg/ml in PBS buffer with 2% sucrose. For longer periods of storage, store at -20°C. Avoid repeat freeze-thaw cycles.

Precautions

CNGB3 Antibody - N-terminal region is for research use only and not for use in diagnostic or therapeutic procedures.

CNGB3 Antibody - N-terminal region - Protein Information**Name** CNGB3**Function**

Visual signal transduction is mediated by a G-protein coupled cascade using cGMP as second messenger. This protein can be activated by cGMP which leads to an opening of the cation channel and thereby causing a depolarization of rod photoreceptors. Induced a flickering channel gating, weakened the outward rectification in the presence of extracellular calcium, increased sensitivity for L-cis diltiazem and enhanced the cAMP efficiency of the channel when coexpressed with CNGA3 (By similarity). Essential for the generation of light-evoked electrical responses in the red-, green- and blue sensitive cones.

Cellular Location

Membrane; Multi-pass membrane protein.

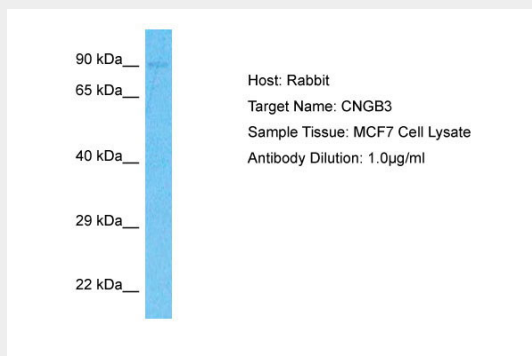
Tissue Location

Expressed specifically in the retina.

CNGB3 Antibody - N-terminal region - Protocols

Provided below are standard protocols that you may find useful for product applications.

- [Western Blot](#)
- [Blocking Peptides](#)
- [Dot Blot](#)
- [Immunohistochemistry](#)
- [Immunofluorescence](#)
- [Immunoprecipitation](#)
- [Flow Cytometry](#)
- [Cell Culture](#)

CNGB3 Antibody - N-terminal region - Images

Host: Rabbit
Target Name: CNGB3
Sample Tissue: MCF7 Whole Cell lysates
Antibody Dilution: 1.0µg/ml

CNGB3 Antibody - N-terminal region - Background

Visual signal transduction is mediated by a G-protein coupled cascade using cGMP as second messenger. This protein can be activated by cGMP which leads to an opening of the cation channel and thereby causing a depolarization of rod photoreceptors. Induced a flickering channel gating, weakened the outward rectification in the presence of extracellular calcium, increased sensitivity for L-cis diltiazem and enhanced the cAMP efficiency of the channel when coexpressed with CNGA3 (By similarity). Essential for the generation of light-evoked electrical responses in the red-, green- and blue sensitive cones.

CNGB3 Antibody - N-terminal region - References

Kohl S.,et al.Hum. Mol. Genet. 9:2107-2116(2000).
Nusbaum C.,et al.Nature 439:331-335(2006).
Sundin O.H.,et al.Nat. Genet. 25:289-293(2000).
Shuart N.G.,et al.Nat. Commun. 2:457-457(2011).

Rojas C.V.,et al.Eur. J. Hum. Genet. 10:638-642(2002).