

**2ABA Antibody - N-terminal region**  
**Rabbit Polyclonal Antibody**  
**Catalog # AI16117****Specification**

---

**2ABA Antibody - N-terminal region - Product Information**

Application	WB
Primary Accession	<a href="#">P63151</a>
Reactivity	Human
Host	Rabbit
Clonality	Polyclonal
Calculated MW	49kDa KDa

**2ABA Antibody - N-terminal region - Additional Information****Gene ID** 5520**Alias Symbol** **PPP2R2A,**  
**Other Names**

Serine/threonine-protein phosphatase 2A 55 kDa regulatory subunit B alpha isoform, PP2A subunit B isoform B55-alpha, PP2A subunit B isoform PR55-alpha, PP2A subunit B isoform R2-alpha, PP2A subunit B isoform alpha, PPP2R2A

**Format**

Liquid. Purified antibody supplied in 1x PBS buffer with 0.09% (w/v) sodium azide and 2% sucrose.

**Reconstitution & Storage**

Add 50 µl of distilled water. Final Anti-2ABA antibody concentration is 1 mg/ml in PBS buffer with 2% sucrose. For longer periods of storage, store at -20°C. Avoid repeat freeze-thaw cycles.

**Precautions**

2ABA Antibody - N-terminal region is for research use only and not for use in diagnostic or therapeutic procedures.

**2ABA Antibody - N-terminal region - Protein Information****Name** PPP2R2A**Function**

Substrate-recognition subunit of protein phosphatase 2A (PP2A) that plays a key role in cell cycle by controlling mitosis entry and exit (PubMed: [1849734](http://www.uniprot.org/citations/1849734), PubMed: [33108758](http://www.uniprot.org/citations/33108758) target="\_blank">1849734</a>, PubMed: [33108758](http://www.uniprot.org/citations/33108758) target="\_blank">33108758</a>). Involved in chromosome clustering during late mitosis by mediating dephosphorylation of MKI67 (By similarity). Essential for serine/threonine-protein phosphatase 2A-mediated dephosphorylation of WEE1, preventing its ubiquitin-mediated proteolysis, increasing WEE1 protein levels, and promoting the G2/M checkpoint (PubMed: [33108758](http://www.uniprot.org/citations/33108758) target="\_blank">33108758</a>).

### Tissue Location

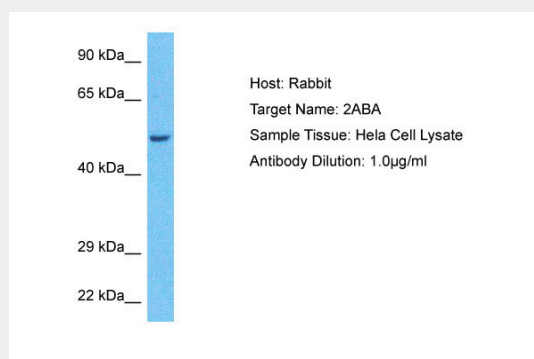
Expressed in all tissues examined.

### 2ABA Antibody - N-terminal region - Protocols

Provided below are standard protocols that you may find useful for product applications.

- [Western Blot](#)
- [Blocking Peptides](#)
- [Dot Blot](#)
- [Immunohistochemistry](#)
- [Immunofluorescence](#)
- [Immunoprecipitation](#)
- [Flow Cytometry](#)
- [Cell Culture](#)

### 2ABA Antibody - N-terminal region - Images



Host: Rabbit  
Target Name: 2ABA  
Sample Tissue: HeLa Whole Cell lysates  
Antibody Dilution: 1.0µg/ml

### 2ABA Antibody - N-terminal region - Background

The B regulatory subunit might modulate substrate selectivity and catalytic activity, and also might direct the localization of the catalytic enzyme to a particular subcellular compartment.

### 2ABA Antibody - N-terminal region - References

Mayer R.E., et al. *Biochemistry* 30:3589-3597(1991).  
Ota T., et al. *Nat. Genet.* 36:40-45(2004).  
Nusbaum C., et al. *Nature* 439:331-335(2006).  
Mural R.J., et al. Submitted (SEP-2005) to the EMBL/GenBank/DDBJ databases.  
Li H.H., et al. *EMBO J.* 26:402-411(2007).