

RGS1 Antibody - N-terminal region
Rabbit Polyclonal Antibody
Catalog # AI16123**Specification**

RGS1 Antibody - N-terminal region - Product Information

| | |
|-------------------|---------------------------|
| Application | WB |
| Primary Accession | Q08116 |
| Other Accession | NP_002913 |
| Reactivity | Human |
| Host | Rabbit |
| Clonality | Polyclonal |
| Calculated MW | 22kDa KDa |

RGS1 Antibody - N-terminal region - Additional Information**Gene ID 5996**Alias Symbol **RGS1, 1R20, BL34, IER1,****Other Names**

Regulator of G-protein signaling 1, RGS1, B-cell activation protein BL34, Early response protein 1R20, RGS1, 1R20, BL34, IER1

Format

Liquid. Purified antibody supplied in 1x PBS buffer with 0.09% (w/v) sodium azide and 2% sucrose.

Reconstitution & Storage

Add 50 µl of distilled water. Final Anti-RGS1 antibody concentration is 1 mg/ml in PBS buffer with 2% sucrose. For longer periods of storage, store at -20°C. Avoid repeat freeze-thaw cycles.

Precautions

RGS1 Antibody - N-terminal region is for research use only and not for use in diagnostic or therapeutic procedures.

RGS1 Antibody - N-terminal region - Protein Information**Name** RGS1**Synonyms** 1R20, BL34, IER1**Function**

Regulates G protein-coupled receptor signaling cascades, including signaling downstream of the N-formylpeptide chemoattractant receptors and leukotriene receptors (PubMed:10480894). Inhibits B cell chemotaxis toward CXCL12 (By similarity). Inhibits signal transduction by increasing the GTPase activity of G protein alpha subunits thereby driving them into their inactive GDP-bound form (PubMed:10480894, PubMed:18434541).

Cellular Location

Cell membrane; Peripheral membrane protein; Cytoplasmic side. Cytoplasm, cytosol

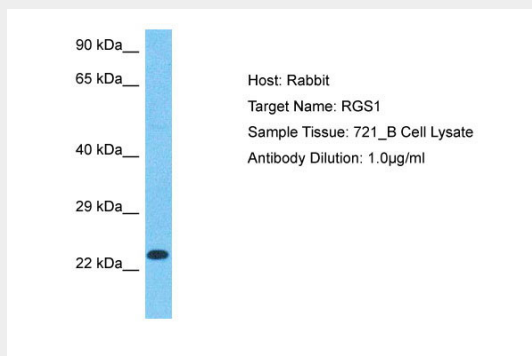
Tissue Location

Detected in peripheral blood monocytes (PubMed:10480894). Expression is relatively low in B-cells and chronic lymphocytic leukemia B-cells; however, in other types of malignant B- cell such as non-Hodgkin lymphoma and hairy cell leukemia, expression is constitutively high (PubMed:8473738).

RGS1 Antibody - N-terminal region - Protocols

Provided below are standard protocols that you may find useful for product applications.

- [Western Blot](#)
- [Blocking Peptides](#)
- [Dot Blot](#)
- [Immunohistochemistry](#)
- [Immunofluorescence](#)
- [Immunoprecipitation](#)
- [Flow Cytometry](#)
- [Cell Culture](#)

RGS1 Antibody - N-terminal region - Images

Host: Rabbit
Target Name: RGS1
Sample Tissue: 721_B Whole Cell lysates
Antibody Dilution: 1.0µg/ml

RGS1 Antibody - N-terminal region - Background

Inhibits signal transduction by increasing the GTPase activity of G protein alpha subunits thereby driving them into their inactive GDP-bound form. This protein may be involved in the regulation of B-cell activation and proliferation.

RGS1 Antibody - N-terminal region - References

Ota T.,et al.Nat. Genet. 36:40-45(2004).
Gregory S.G.,et al.Nature 441:315-321(2006).
Hong J.X.,et al.J. Immunol. 150:3895-3904(1993).
Newton J.S.,et al.Biochim. Biophys. Acta 1216:314-316(1993).
Puhl H.L. III,et al.Submitted (MAR-2002) to the EMBL/GenBank/DBJ databases.