

ASF1A Antibody - C-terminal region
Rabbit Polyclonal Antibody
Catalog # AI16139**Specification**

ASF1A Antibody - C-terminal region - Product Information

Application	WB
Primary Accession	O9Y294
Other Accession	NP_054753
Reactivity	Human
Host	Rabbit
Clonality	Polyclonal
Calculated MW	22kDa KDa

ASF1A Antibody - C-terminal region - Additional Information**Gene ID** 25842**Alias Symbol** ASF1A, CGI-98, HSPC146,
Other Names

Histone chaperone ASF1A, Anti-silencing function protein 1 homolog A, hAsf1, hAsf1a, CCG1-interacting factor A, CIA, hCIA, ASF1A

Format

Liquid. Purified antibody supplied in 1x PBS buffer with 0.09% (w/v) sodium azide and 2% sucrose.

Reconstitution & StorageAdd 50 μ l of distilled water. Final Anti-ASF1A antibody concentration is 1 mg/ml in PBS buffer with 2% sucrose. For longer periods of storage, store at -20°C. Avoid repeat freeze-thaw cycles.**Precautions**

ASF1A Antibody - C-terminal region is for research use only and not for use in diagnostic or therapeutic procedures.

ASF1A Antibody - C-terminal region - Protein Information**Name** ASF1A {ECO:0000303|PubMed:10759893, ECO:0000312|HGNC:HGNC:20995}**Function**

Histone chaperone that facilitates histone deposition and histone exchange and removal during nucleosome assembly and disassembly (PubMed:10759893, PubMed:11897662, PubMed:12842904, PubMed:14718166, PubMed:15664198, PubMed:16151251, PubMed:21454524). Cooperates

with chromatin assembly factor 1 (CAF-1) to promote replication-dependent chromatin assembly and with HIRA to promote replication-independent chromatin assembly (PubMed:11897662, PubMed:14718166, PubMed:15664198). Promotes homologous recombination-mediated repair of double-strand breaks (DSBs) at stalled or collapsed replication forks: acts by mediating histone replacement at DSBs, leading to recruitment of the MMS22L-TONSL complex and subsequent loading of RAD51 (PubMed:29478807). Also involved in the nuclear import of the histone H3-H4 dimer together with importin-4 (IPO4): specifically recognizes and binds newly synthesized histones with the monomethylation of H3 'Lys-9' and acetylation at 'Lys-14' (H3K9me1K14ac) marks, and diacetylation at 'Lys-5' and 'Lys-12' of H4 (H4K5K12ac) marks in the cytosol (PubMed:21454524, PubMed:29408485). Required for the formation of senescence-associated heterochromatin foci (SAHF) and efficient senescence-associated cell cycle exit (PubMed:15621527).

Cellular Location

Nucleus. Chromosome

Tissue Location

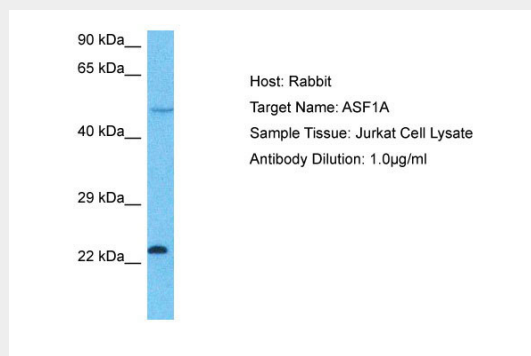
Ubiquitously expressed.

ASF1A Antibody - C-terminal region - Protocols

Provided below are standard protocols that you may find useful for product applications.

- [Western Blot](#)
- [Blocking Peptides](#)
- [Dot Blot](#)
- [Immunohistochemistry](#)
- [Immunofluorescence](#)
- [Immunoprecipitation](#)
- [Flow Cytometry](#)
- [Cell Culture](#)

ASF1A Antibody - C-terminal region - Images



Host: Rabbit
Target Name: ASF1A
Sample Tissue: Jurkat Whole Cell lysates

Antibody Dilution: 1.0µg/ml

ASF1A Antibody - C-terminal region - Background

Histone chaperone that facilitates histone deposition and histone exchange and removal during nucleosome assembly and disassembly. Cooperates with chromatin assembly factor 1 (CAF-1) to promote replication-dependent chromatin assembly and with HIRA to promote replication-independent chromatin assembly. Required for the formation of senescence-associated heterochromatin foci (SAHF) and efficient senescence-associated cell cycle exit.

ASF1A Antibody - C-terminal region - References

Munakata T., et al. Genes Cells 5:221-233(2000).
Sillje H.H.W., et al. Curr. Biol. 11:1068-1073(2001).
Lai C.-H., et al. Genome Res. 10:703-713(2000).
Zhang Q.-H., et al. Genome Res. 10:1546-1560(2000).
Wiemann S., et al. Genome Res. 11:422-435(2001).