

HSPB1 antibody - C-terminal region
Rabbit Polyclonal Antibody
Catalog # AI16199**Specification**

HSPB1 antibody - C-terminal region - Product Information

Application	WB
Primary Accession	P04792
Other Accession	NM_001540 , NP_001531
Reactivity	Human
Predicted	Human
Host	Rabbit
Clonality	Polyclonal
Calculated MW	23kDa KDa

HSPB1 antibody - C-terminal region - Additional Information**Gene ID** 3315**Alias Symbol** CMT2F, HMN2B, HSP27, HSP28, Hsp25, SRP27, HS.76067**Other Names**

Heat shock protein beta-1, HspB1, 28 kDa heat shock protein, Estrogen-regulated 24 kDa protein, Heat shock 27 kDa protein, HSP 27, Stress-responsive protein 27, SRP27, HSPB1, HSP27, HSP28

Format

Liquid. Purified antibody supplied in 1x PBS buffer with 0.09% (w/v) sodium azide and 2% sucrose.

Reconstitution & Storage

Add 100 ul of distilled water. Final anti-HSPB1 antibody concentration is 1 mg/ml in PBS buffer with 2% sucrose. For longer periods of storage, store at 20°C. Avoid repeat freeze-thaw cycles.

Precautions

HSPB1 antibody - C-terminal region is for research use only and not for use in diagnostic or therapeutic procedures.

HSPB1 antibody - C-terminal region - Protein Information**Name** HSPB1**Synonyms** HSP27, HSP28**Function**

Small heat shock protein which functions as a molecular chaperone probably maintaining denatured proteins in a folding- competent state (PubMed:10383393, PubMed:20178975). Plays a role in stress resistance and actin organization (PubMed:10383393).

href="http://www.uniprot.org/citations/19166925" target="_blank">19166925). Through its molecular chaperone activity may regulate numerous biological processes including the phosphorylation and the axonal transport of neurofilament proteins (PubMed:23728742).

Cellular Location

Cytoplasm. Nucleus Cytoplasm, cytoskeleton, spindle Note=Cytoplasmic in interphase cells. Colocalizes with mitotic spindles in mitotic cells. Translocates to the nucleus during heat shock and resides in sub-nuclear structures known as SC35 speckles or nuclear splicing speckles.

Tissue Location

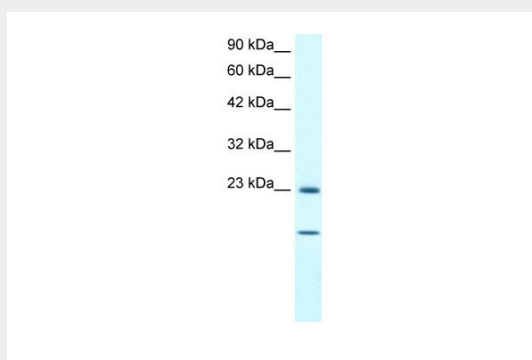
Detected in all tissues tested: skeletal muscle, heart, aorta, large intestine, small intestine, stomach, esophagus, bladder, adrenal gland, thyroid, pancreas, testis, adipose tissue, kidney, liver, spleen, cerebral cortex, blood serum and cerebrospinal fluid. Highest levels are found in the heart and in tissues composed of striated and smooth muscle.

HSPB1 antibody - C-terminal region - Protocols

Provided below are standard protocols that you may find useful for product applications.

- [Western Blot](#)
- [Blocking Peptides](#)
- [Dot Blot](#)
- [Immunohistochemistry](#)
- [Immunofluorescence](#)
- [Immunoprecipitation](#)
- [Flow Cytometry](#)
- [Cell Culture](#)

HSPB1 antibody - C-terminal region - Images



WB Suggested Anti-HSPB1 Antibody Titration: 1.0µg/ml
Positive Control: HepG2 cell lysate

HSPB1 antibody - C-terminal region - Background

Involved in stress resistance and actin organization.

HSPB1 antibody - C-terminal region - References

Hickey E., et al. Nucleic Acids Res. 14:4127-4145(1986).
Carper S.W., et al. Nucleic Acids Res. 18:6457-6457(1990).

Hino M.,et al.Biochem. Biophys. Res. Commun. 271:164-169(2000).
Briolay J.,et al.Submitted (JUN-1993) to the EMBL/GenBank/DDBJ databases.
Yu W.,et al.Genome Res. 7:353-358(1997).