

**AREB6 antibody - N-terminal region**  
**Rabbit Polyclonal Antibody**  
**Catalog # AI16228****Specification**

---

**AREB6 antibody - N-terminal region - Product Information**

Application	WB
Primary Accession	<a href="#">P37275</a>
Other Accession	<a href="#">NM_030751</a> , <a href="#">NP_110378</a>
Reactivity	Human
Host	Rabbit
Clonality	Polyclonal
Calculated MW	124kDa KDa

**AREB6 antibody - N-terminal region - Additional Information****Gene ID** 6935

Alias Symbol	AREB6, BZP, MGC133261, NIL-2-A, NIL-2A, TCF8, ZEB, ZFHEP, ZFH1A, FECD6, NIL2A, PPCD3, DELTAEF1
--------------	--

**Other Names**

Zinc finger E-box-binding homeobox 1, NIL-2-A zinc finger protein, Negative regulator of IL2, Transcription factor 8, TCF-8, ZEB1, AREB6, TCF8

**Format**

Liquid. Purified antibody supplied in 1x PBS buffer with 0.09% (w/v) sodium azide and 2% sucrose.

**Reconstitution & Storage**

Add 100 ul of distilled water. Final anti-AREB6 antibody concentration is 1 mg/ml in PBS buffer with 2% sucrose. For longer periods of storage, store at 20°C. Avoid repeat freeze-thaw cycles.

**Precautions**

AREB6 antibody - N-terminal region is for research use only and not for use in diagnostic or therapeutic procedures.

**AREB6 antibody - N-terminal region - Protein Information**

**Name** ZEB1 ([HGNC:11642](#))

**Function**

Acts as a transcriptional repressor. Inhibits interleukin-2 (IL-2) gene expression. Enhances or represses the promoter activity of the ATP1A1 gene depending on the quantity of cDNA and on the cell type. Represses E-cadherin promoter and induces an epithelial-mesenchymal transition (EMT) by recruiting SMARCA4/BRG1. Represses BCL6 transcription in the presence of the corepressor CTBP1. Positively regulates neuronal differentiation. Represses RCOR1 transcription activation during neurogenesis. Represses transcription by binding to the E box (5'-CANNTG-3'). In the absence of TGFB1, acts as a repressor of COL1A2 transcription via binding to the E-box in the

upstream enhancer region (By similarity).

### Cellular Location

Nucleus

### Tissue Location

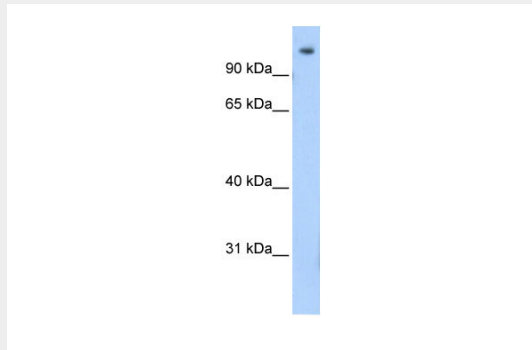
Colocalizes with SMARCA4/BRG1 in E-cadherin- negative cells from established lines, and stroma of normal colon as well as in de-differentiated epithelial cells at the invasion front of colorectal carcinomas (at protein level). Expressed in heart and skeletal muscle, but not in liver, spleen, or pancreas

## AREB6 antibody - N-terminal region - Protocols

Provided below are standard protocols that you may find useful for product applications.

- [Western Blot](#)
- [Blocking Peptides](#)
- [Dot Blot](#)
- [Immunohistochemistry](#)
- [Immunofluorescence](#)
- [Immunoprecipitation](#)
- [Flow Cytometry](#)
- [Cell Culture](#)

## AREB6 antibody - N-terminal region - Images



Host: Rabbit

Target Name: AREB6

Sample Tissue: Human Fetal Muscle cell lysate

s

Antibody Dilution: 1.0µg/ml

## AREB6 antibody - N-terminal region - Background

Acts as a transcriptional repressor. Inhibits interleukin-2 (IL-2) gene expression. Enhances or represses the promoter activity of the ATP1A1 gene depending on the quantity of cDNA and on the cell type. Represses E-cadherin promoter and induces an epithelial-mesenchymal transition (EMT) by recruiting SMARCA4/BRG1. Represses BCL6 transcription in the presence of the corepressor CTBP1. Positively regulates neuronal differentiation. Represses RCOR1 transcription activation during neurogenesis. Represses transcription by binding to the E box (5'-CANNTG-3'). Promotes tumorigenicity by repressing stemness-inhibiting microRNAs.

## AREB6 antibody - N-terminal region - References

Watanabe Y.,et al.J. Biochem. 114:849-855(1993).  
Bachman N.J.,et al.Submitted (JUL-1994) to the EMBL/GenBank/DDBJ databases.  
Ota T.,et al.Nat. Genet. 36:40-45(2004).  
Deloukas P.,et al.Nature 429:375-381(2004).  
Mural R.J.,et al.Submitted (SEP-2005) to the EMBL/GenBank/DDBJ databases.