

**NR2F2 antibody - N-terminal region**  
**Rabbit Polyclonal Antibody**  
**Catalog # AI16244****Specification**

---

**NR2F2 antibody - N-terminal region - Product Information**

Application	WB
Primary Accession	<a href="#">P24468</a>
Other Accession	<a href="#">NM_021005</a> , <a href="#">NP_066285</a>
Reactivity	Human, Mouse, Rabbit, Pig, Dog
Predicted	Human, Mouse, Rabbit, Pig, Dog
Host	Rabbit
Clonality	Polyclonal
Calculated MW	45kDa KDa

**NR2F2 antibody - N-terminal region - Additional Information****Gene ID** 7026**Alias Symbol** ARP1, COUP-TFII, COUPTFB, MGC117452, SVP40, TFCOUP2, NF-E3, NR2F1, COUPTFII**Other Names**

COUP transcription factor 2, COUP-TF2, Apolipoprotein A-I regulatory protein 1, ARP-1, COUP transcription factor II, COUP-TF II, Nuclear receptor subfamily 2 group F member 2, NR2F2, ARP1, TFCOUP2

**Format**

Liquid. Purified antibody supplied in 1x PBS buffer with 0.09% (w/v) sodium azide and 2% sucrose.

**Reconstitution & Storage**

Add 50 ul of distilled water. Final anti-NR2F2 antibody concentration is 1 mg/ml in PBS buffer with 2% sucrose. For longer periods of storage, store at 20°C. Avoid repeat freeze-thaw cycles.

**Precautions**

NR2F2 antibody - N-terminal region is for research use only and not for use in diagnostic or therapeutic procedures.

**NR2F2 antibody - N-terminal region - Protein Information****Name** NR2F2**Synonyms** ARP1, TFCOUP2**Function**

Ligand-activated transcription factor. Activated by high concentrations of 9-cis-retinoic acid and all-trans-retinoic acid, but not by dexamethasone, cortisol or progesterone (in vitro). Regulation of the apolipoprotein A-I gene transcription. Binds to DNA site A. May be required to establish ovary identity during early gonad development (PubMed:&lt;a

href="http://www.uniprot.org/citations/29478779" target="\_blank">29478779</a>).

#### Cellular Location

Nucleus.

#### Tissue Location

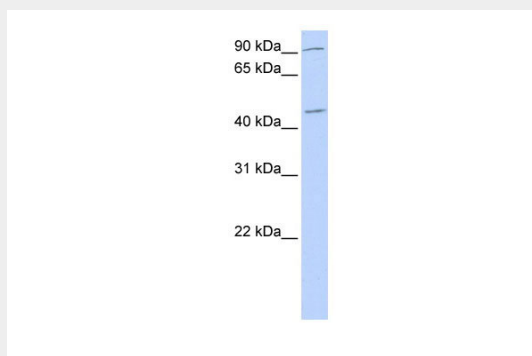
Ubiquitous. Expressed in the stromal cells of developing fetal ovaries (PubMed:29478779)

### NR2F2 antibody - N-terminal region - Protocols

Provided below are standard protocols that you may find useful for product applications.

- [Western Blot](#)
- [Blocking Peptides](#)
- [Dot Blot](#)
- [Immunohistochemistry](#)
- [Immunofluorescence](#)
- [Immunoprecipitation](#)
- [Flow Cytometry](#)
- [Cell Culture](#)

### NR2F2 antibody - N-terminal region - Images



WB Suggested Anti-NR2F2 Antibody Titration: 0.2-1 µg/ml

ELISA Titer: 1:62500

Positive Control: Human brain

### NR2F2 antibody - N-terminal region - Background

Ligand-activated transcription factor. Activated by high concentrations of 9-cis-retinoic acid and all-trans-retinoic acid, but not by dexamethasone, cortisol or progesterone (in vitro). Regulation of the apolipoprotein A-I gene transcription. Binds to DNA site A.

### NR2F2 antibody - N-terminal region - References

Ladias J.A.A., et al. Science 251:561-565(1991).

Speckmayer R.W.M., et al. Submitted (OCT-1996) to the EMBL/GenBank/DDBJ databases.

Kobayashi T., et al. FEBS Lett. 582:2737-2744(2008).

Schote A.B., et al. Submitted (AUG-2008) to the EMBL/GenBank/DDBJ databases.

Ota T., et al. Nat. Genet. 36:40-45(2004).