

GCM1 antibody - N-terminal region
Rabbit Polyclonal Antibody
Catalog # AI16248**Specification**

GCM1 antibody - N-terminal region - Product Information

Application	WB, IHC
Primary Accession	O9NP62
Other Accession	NM_003643 , NP_003634
Reactivity	Human, Mouse, Rat, Dog
Predicted	Human, Mouse, Rat, Dog
Host	Rabbit
Clonality	Polyclonal
Calculated MW	49kDa KDa

GCM1 antibody - N-terminal region - Additional Information**Gene ID** 8521**Alias Symbol** GCMA, hGCMA**Other Names**

Chorion-specific transcription factor GCMA, hGCMA, GCM motif protein 1, Glial cells missing homolog 1, GCM1, GCMA

Format

Liquid. Purified antibody supplied in 1x PBS buffer with 0.09% (w/v) sodium azide and 2% sucrose.

Reconstitution & Storage

Add 50 ul of distilled water. Final anti-GCM1 antibody concentration is 1 mg/ml in PBS buffer with 2% sucrose. For longer periods of storage, store at 20°C. Avoid repeat freeze-thaw cycles.

Precautions

GCM1 antibody - N-terminal region is for research use only and not for use in diagnostic or therapeutic procedures.

GCM1 antibody - N-terminal region - Protein Information**Name** GCM1**Synonyms** GCMA**Function**Transcription factor involved in the control of expression of placental growth factor (PGF) and other placenta-specific genes (PubMed: [10542267](http://www.uniprot.org/citations/10542267), PubMed: [18160678](http://www.uniprot.org/citations/18160678)). Binds to the trophoblast-specific element 2 (TSE2) of the aromatase gene enhancer (PubMed: [10542267](http://www.uniprot.org/citations/10542267)). Binds to the SYDE1 promoter (PubMed: [10542267](http://www.uniprot.org/citations/10542267)).

[27917469](http://www.uniprot.org/citations/27917469)). Has a central role in mediating the differentiation of trophoblast cells along both the villous and extravillous pathways in placental development (PubMed:[19219068](http://www.uniprot.org/citations/19219068)).

Cellular Location

Nucleus {ECO:0000255|PROSITE-ProRule:PRU00245}.

Tissue Location

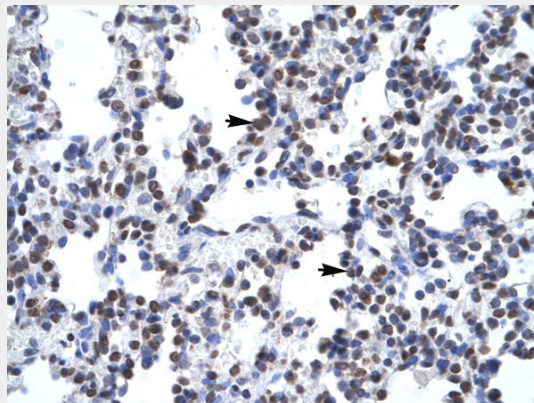
Highly expressed in the placenta (PubMed:10542267). Expressed in trophoblast cells of the villi (PubMed:27917469)

GCM1 antibody - N-terminal region - Protocols

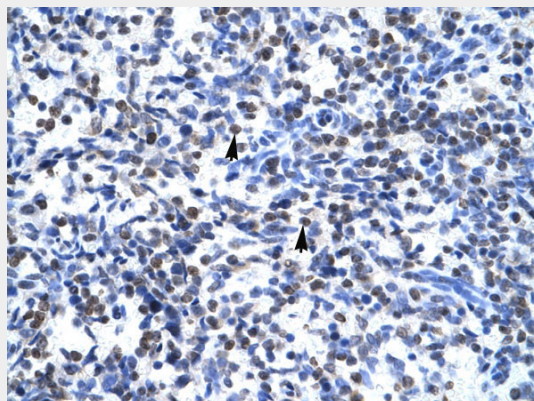
Provided below are standard protocols that you may find useful for product applications.

- [Western Blot](#)
- [Blocking Peptides](#)
- [Dot Blot](#)
- [Immunohistochemistry](#)
- [Immunofluorescence](#)
- [Immunoprecipitation](#)
- [Flow Cytometry](#)
- [Cell Culture](#)

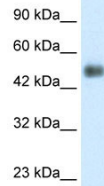
GCM1 antibody - N-terminal region - Images



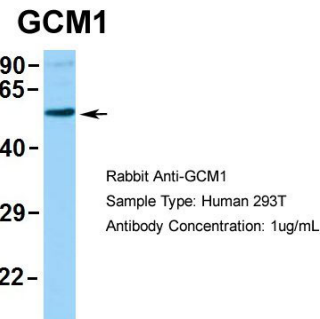
Human Lung



Human Spleen



WB Suggested Anti-GCM1 Antibody Titration: 0.2-1 µg/ml
ELISA Titer: 1:7812500
Positive Control: Human Placenta



Human 293T

GCM1 antibody - N-terminal region - Background

Transcription factor that is necessary for placental development. Binds to the trophoblast-specific element 2 (TSE2) of the aromatase gene enhancer.

GCM1 antibody - N-terminal region - References

- Akiyama Y., et al. Proc. Natl. Acad. Sci. U.S.A. 93:14912-14916(1996).
- Nishizawa M., et al. Submitted (APR-2000) to the EMBL/GenBank/DDBJ databases.
- Yamada K., et al. J. Biol. Chem. 274:32279-32286(1999).
- Yamada K., et al. Biochem. Biophys. Res. Commun. 278:134-139(2000).
- Mungall A.J., et al. Nature 425:805-811(2003).