

GABPB2 antibody - C-terminal region
Rabbit Polyclonal Antibody
Catalog # AI16262**Specification**

GABPB2 antibody - C-terminal region - Product Information

Application	WB, IHC
Primary Accession	Q06547
Other Accession	NM_005254 , NP_005245
Predicted	Chicken
Host	Rabbit
Clonality	Polyclonal
Calculated MW	42kDa KDa

GABPB2 antibody - C-terminal region - Additional Information**Gene ID** 2553**Alias Symbol** **E4TF1, GABPB, BABPB2, E4TF1B, GABPB2, NRF2B1, NRF2B2, E4TF1-47, E4TF1-53****Other Names**

GA-binding protein subunit beta-1, GABP subunit beta-1, GABPB-1, GABP subunit beta-2, GABPB-2, Nuclear respiratory factor 2, Transcription factor E4TF1-47, Transcription factor E4TF1-53, GABPB1, E4TF1B, GABPB, GABPB2

Format

Liquid. Purified antibody supplied in 1x PBS buffer with 0.09% (w/v) sodium azide and 2% sucrose.

Reconstitution & Storage

Add 50 ul of distilled water. Final anti-GABPB2 antibody concentration is 1 mg/ml in PBS buffer with 2% sucrose. For longer periods of storage, store at 20°C. Avoid repeat freeze-thaw cycles.

Precautions

GABPB2 antibody - C-terminal region is for research use only and not for use in diagnostic or therapeutic procedures.

GABPB2 antibody - C-terminal region - Protein Information**Name** GABPB1**Synonyms** E4TF1B {ECO:0000303|PubMed:8441384}, GAB**Function**

Transcription factor capable of interacting with purine rich repeats (GA repeats) (PubMed:10675337, PubMed:8441384, PubMed:8816484). Acts as a master regulator of nuclear-encoded mitochondrial genes (By similarity).

Cellular Location

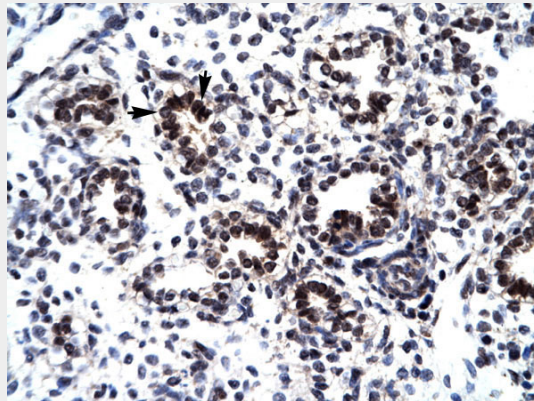
Nucleus

GABPB2 antibody - C-terminal region - Protocols

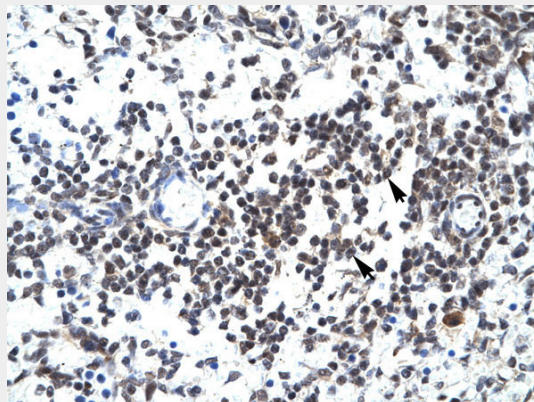
Provided below are standard protocols that you may find useful for product applications.

- [Western Blot](#)
- [Blocking Peptides](#)
- [Dot Blot](#)
- [Immunohistochemistry](#)
- [Immunofluorescence](#)
- [Immunoprecipitation](#)
- [Flow Cytometry](#)
- [Cell Culture](#)

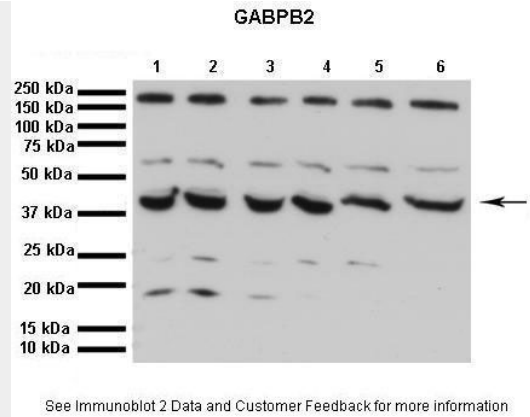
GABPB2 antibody - C-terminal region - Images



Human Lung



Human Spleen



Lanes: 1. 40 ug human HK2 cell (kidney proximal tubular cell line) lysate
2. 40 ug H₂O₂ treated human HK2 cell lysate
3. 40 ug H₂O₂ treated human HK2 cell lysate
4. 40 ug H₂O₂ treated human HK2 cell lysate
5. 40 ug H₂O₂ treated human HK2 cell lysate
6. 40 ug H₂O₂ treated human HK2 cell lysate

Primary Antibody Dilution: 1:1000
Secondary Antibody: Goat anti-Rabbit HRP
Secondary Antibody Dilution: 1:2000
Gene Name: GABPB2

GABPB2 antibody - C-terminal region - Background

Transcription factor capable of interacting with purine rich repeats (GA repeats). Necessary for the expression of the Adenovirus E4 gene.

GABPB2 antibody - C-terminal region - References

Watanabe H., et al. Mol. Cell. Biol. 13:1385-1391(1993).
Gugneja S., et al. Mol. Cell. Biol. 15:102-111(1995).
Yang S.J., et al. Submitted (SEP-2007) to the EMBL/GenBank/DDBJ databases.
Kalnine N., et al. Submitted (MAY-2003) to the EMBL/GenBank/DDBJ databases.
Mural R.J., et al. Submitted (JUL-2005) to the EMBL/GenBank/DDBJ databases.