

GPR183 / EBI2 Antibody (Extracellular Domain)
Rabbit Polyclonal Antibody
Catalog # ALS10016**Specification**

GPR183 / EBI2 Antibody (Extracellular Domain) - Product Information

Application	IHC-P
Primary Accession	P32249
Reactivity	Human, Monkey
Host	Rabbit
Clonality	Polyclonal
Calculated MW	41kDa KDa
Dilution	IHC-P~~N/A

GPR183 / EBI2 Antibody (Extracellular Domain) - Additional Information**Gene ID** 1880**Other Names**

G-protein coupled receptor 183, Epstein-Barr virus-induced G-protein coupled receptor 2, EBI2, EBV-induced G-protein coupled receptor 2, GPR183, EBI2

Target/Specificity

Human GPR183 / EBI2. BLAST analysis of the peptide immunogen showed no homology with other human proteins, except NBEA (39%).

Format

PBS, 0.1% Sodium Azide

Reconstitution & Storage

Long term: -70°C; Short term: +4°C

Precautions

GPR183 / EBI2 Antibody (Extracellular Domain) is for research use only and not for use in diagnostic or therapeutic procedures.

GPR183 / EBI2 Antibody (Extracellular Domain) - Protein Information**Name** GPR183 ([HGNC:3128](#))**Function**

G-protein coupled receptor expressed in lymphocytes that acts as a chemotactic receptor for B-cells, T-cells, splenic dendritic cells, monocytes/macrophages and astrocytes (By similarity). Receptor for oxysterol 7-alpha,25-dihydroxycholesterol (7-alpha,25-OHC) and other related oxysterols (PubMed: [21796212](http://www.uniprot.org/citations/21796212) target="_blank">21796212, PubMed: [22875855](http://www.uniprot.org/citations/22875855) target="_blank">22875855, PubMed: [22930711](http://www.uniprot.org/citations/22930711) target="_blank">22930711). Mediates cell positioning and movement of a number of cells by

binding the 7- α ,25-OHC ligand that forms a chemotactic gradient (By similarity). Binding of 7- α ,25-OHC mediates the correct localization of B-cells during humoral immune responses (By similarity). Guides B-cell movement along the B-cell zone-T-cell zone boundary and later to interfollicular and outer follicular regions (By similarity). Its specific expression during B-cell maturation helps position B-cells appropriately for mounting T-dependent antibody responses (By similarity). Collaborates with CXCR5 to mediate B-cell migration; probably by forming a heterodimer with CXCR5 that affects the interaction between of CXCL13 and CXCR5 (PubMed:22913878). Also acts as a chemotactic receptor for some T-cells upon binding to 7- α ,25-OHC ligand (By similarity). Promotes follicular helper T (Tfh) cells differentiation by positioning activated T-cells at the follicle-T-zone interface, promoting contact of newly activated CD4 T-cells with activated dendritic cells and exposing them to Tfh-cell-promoting inducible costimulator (ICOS) ligand (By similarity). Expression in splenic dendritic cells is required for their homeostasis, localization and ability to induce B- and T-cell responses: GPR183 acts as a chemotactic receptor in dendritic cells that mediates the accumulation of CD4(+) dendritic cells in bridging channels (By similarity). Regulates migration of astrocytes and is involved in communication between astrocytes and macrophages (PubMed:25297897). Promotes osteoclast precursor migration to bone surfaces (By similarity). Signals constitutively through G(i)- α , but not G(s)- α or G(q)- α (PubMed:21673108, PubMed:25297897). Signals constitutively also via MAPK1/3 (ERK1/2) (By similarity).

Cellular Location

Cell membrane; Multi-pass membrane protein

Tissue Location

Expressed abundantly in lymphoid tissues such as spleen and lymph node, and in B- and T-lymphocytes (PubMed:16540462, PubMed:8383238). Also highly expressed in lung, heart and gastrointestinal tract, and weakly expressed in the urogenital system and brain (PubMed:16540462, PubMed:8383238). Expressed in astrocytes (PubMed:25297897).

Volume

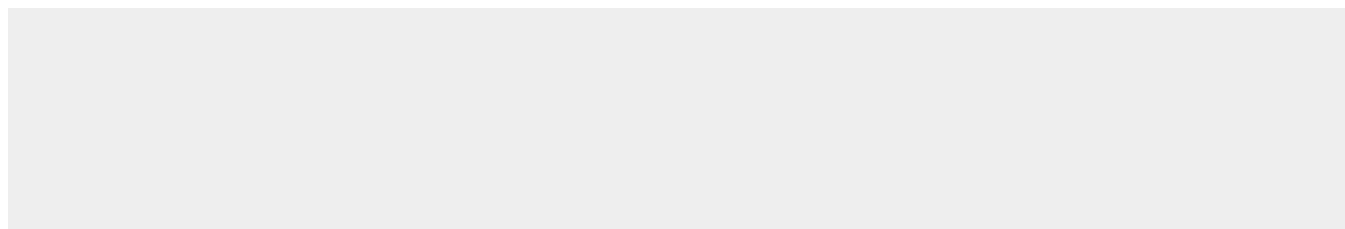
Array

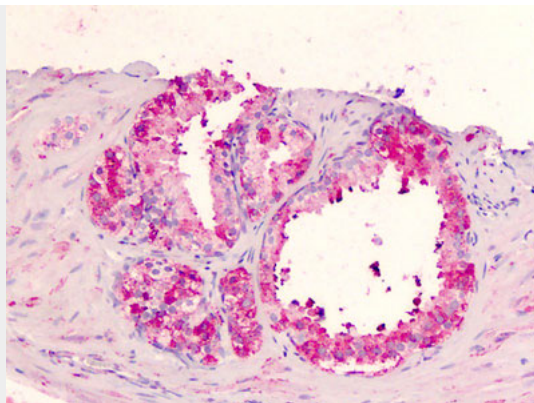
GPR183 / EBI2 Antibody (Extracellular Domain) - Protocols

Provided below are standard protocols that you may find useful for product applications.

- [Western Blot](#)
- [Blocking Peptides](#)
- [Dot Blot](#)
- [Immunohistochemistry](#)
- [Immunofluorescence](#)
- [Immunoprecipitation](#)
- [Flow Cytometry](#)
- [Cell Culture](#)

GPR183 / EBI2 Antibody (Extracellular Domain) - Images





Human Prostate: Formalin-Fixed, Paraffin-Embedded (FFPE)

GPR183 / EBI2 Antibody (Extracellular Domain) - Background

Receptor for oxysterol 7- α ,25-dihydroxycholesterol (7- α ,25-OHC) and other related oxysterols. Binding of 7- α ,25-OHC mediates the correct localization of B-cells during humoral immune responses. Promotes activated B-cell localization in the outer follicle and interfollicular regions. Its specific expression during B-cell maturation helps position B-cells appropriately for mounting T-dependent antibody responses (By similarity). Signals constitutively through G(i)- α , but not through G(s)- α or G(q)- α . Signals constitutively also via MAPK1/3 (ERK1/2).

GPR183 / EBI2 Antibody (Extracellular Domain) - References

- Birkenbach M.P.,et al.J. Virol. 67:2209-2220(1993).
- Ota T.,et al.Nat. Genet. 36:40-45(2004).
- Totoki Y.,et al.Submitted (APR-2005) to the EMBL/GenBank/DDBJ databases.
- Dunham A.,et al.Nature 428:522-528(2004).
- Mural R.J.,et al.Submitted (JUL-2005) to the EMBL/GenBank/DDBJ databases.