

EDNRB / Endothelin B Receptor Antibody (N-Terminus)
Rabbit Polyclonal Antibody
Catalog # ALS10018

Specification

EDNRB / Endothelin B Receptor Antibody (N-Terminus) - Product Information

Application	IHC
Primary Accession	P24530
Reactivity	Human, Dog
Host	Rabbit
Clonality	Polyclonal
Calculated MW	50kDa KDa

EDNRB / Endothelin B Receptor Antibody (N-Terminus) - Additional Information

Gene ID 1910

Other Names

Endothelin B receptor, ET-B, ET-BR, Endothelin receptor non-selective type, EDNRB, ETRB

Target/Specificity

Human EDNRB. BLAST analysis of the peptide immunogen showed no homology with other human proteins, except PTPN5 (68%).

Reconstitution & Storage

Long term: -70°C; Short term: +4°C

Precautions

EDNRB / Endothelin B Receptor Antibody (N-Terminus) is for research use only and not for use in diagnostic or therapeutic procedures.

EDNRB / Endothelin B Receptor Antibody (N-Terminus) - Protein Information

Name EDNRB ([HGNC:3180](#))

Synonyms ETRB

Function

Non-specific receptor for endothelin 1, 2, and 3. Mediates its action by association with G proteins that activate a phosphatidylinositol-calcium second messenger system.

Cellular Location

Cell membrane; Multi-pass membrane protein. Note=internalized after activation by endothelins.

Tissue Location

Expressed in placental stem villi vessels, but not in cultured placental villi smooth muscle cells

Volume

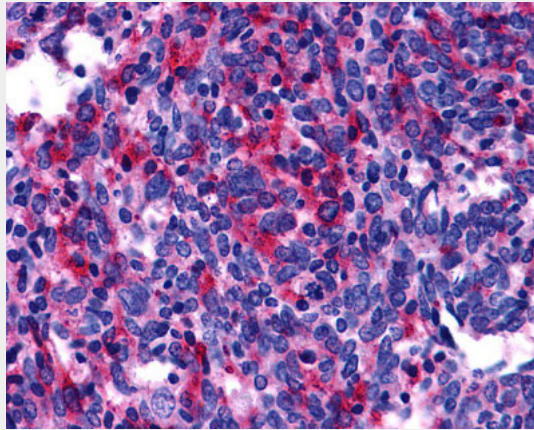
50 µl

EDNRB / Endothelin B Receptor Antibody (N-Terminus) - Protocols

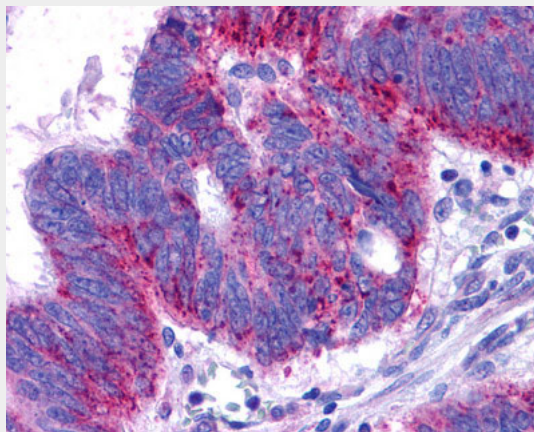
Provided below are standard protocols that you may find useful for product applications.

- [Western Blot](#)
- [Blocking Peptides](#)
- [Dot Blot](#)
- [Immunohistochemistry](#)
- [Immunofluorescence](#)
- [Immunoprecipitation](#)
- [Flow Cytometry](#)
- [Cell Culture](#)

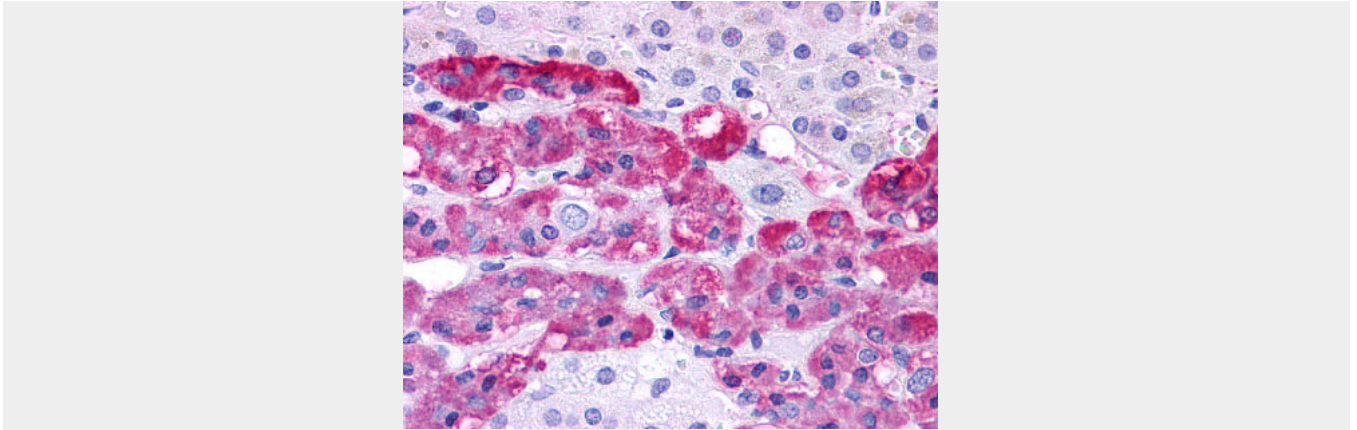
EDNRB / Endothelin B Receptor Antibody (N-Terminus) - Images



Anti-EDNRB / Endothelin B Receptor antibody IHC of human Lung, Small Cell Carcinoma.



Anti-EDNRB / Endothelin B Receptor antibody IHC of human Colon, Carcinoma.



Anti-EDNRB antibody ALS10018 IHC of human adrenal, medulla.

EDNRB / Endothelin B Receptor Antibody (N-Terminus) - Background

Non-specific receptor for endothelin 1, 2, and 3. Mediates its action by association with G proteins that activate a phosphatidylinositol-calcium second messenger system.

EDNRB / Endothelin B Receptor Antibody (N-Terminus) - References

- Nakamuta M.,et al.Biochem. Biophys. Res. Commun. 177:34-39(1991).
- Ogawa Y.,et al.Biochem. Biophys. Res. Commun. 178:248-255(1991).
- Sakamoto A.,et al.Biochem. Biophys. Res. Commun. 178:656-663(1991).
- Haendler B.,et al.J. Cardiovasc. Pharmacol. 20:S1-S4(1992).
- Arai H.,et al.Jpn. Circ. J. 56:1303-1307(1992).