

S1PR4 / SIP4 / EDG6 Antibody (Cytoplasmic Domain)
Rabbit Polyclonal Antibody
Catalog # ALS10023**Specification**

S1PR4 / SIP4 / EDG6 Antibody (Cytoplasmic Domain) - Product Information

Application	IHC-P
Primary Accession	O95977
Reactivity	Human
Host	Rabbit
Clonality	Polyclonal
Calculated MW	42kDa KDa
Dilution	IHC-P ~ ~N/A

S1PR4 / SIP4 / EDG6 Antibody (Cytoplasmic Domain) - Additional Information**Gene ID** 8698**Other Names**

Sphingosine 1-phosphate receptor 4, S1P receptor 4, S1P4, Endothelial differentiation G-protein coupled receptor 6, Sphingosine 1-phosphate receptor Edg-6, S1P receptor Edg-6, S1PR4, EDG6

Target/Specificity

Human S1PR4 / EDG6. BLAST analysis of the peptide immunogen showed no homology with other human proteins.

Reconstitution & Storage

Long term: -70°C; Short term: +4°C

Precautions

S1PR4 / SIP4 / EDG6 Antibody (Cytoplasmic Domain) is for research use only and not for use in diagnostic or therapeutic procedures.

S1PR4 / SIP4 / EDG6 Antibody (Cytoplasmic Domain) - Protein Information**Name** S1PR4**Synonyms** EDG6**Function**

Receptor for the lysosphingolipid sphingosine 1-phosphate (S1P). S1P is a bioactive lysophospholipid that elicits diverse physiological effect on most types of cells and tissues. May be involved in cell migration processes that are specific for lymphocytes.

Cellular Location

Cell membrane; Multi-pass membrane protein.

Tissue Location

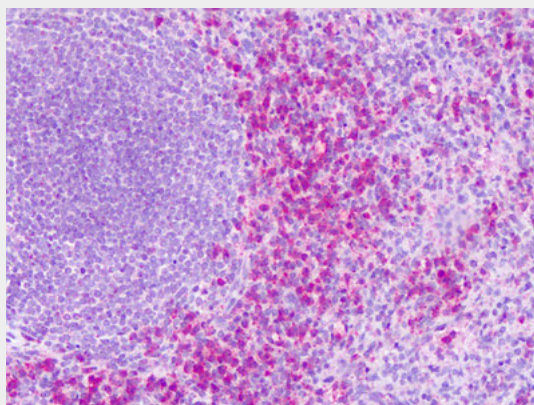
Specifically expressed in fetal and adult lymphoid and hematopoietic tissue as well as in lung. Considerable level of expression in adult and fetal spleen as well as adult peripheral leukocytes and lung. Lower expression in adult thymus, lymph node, bone marrow, and appendix as well as in fetal liver, thymus, and lung

S1PR4 / SIP4 / EDG6 Antibody (Cytoplasmic Domain) - Protocols

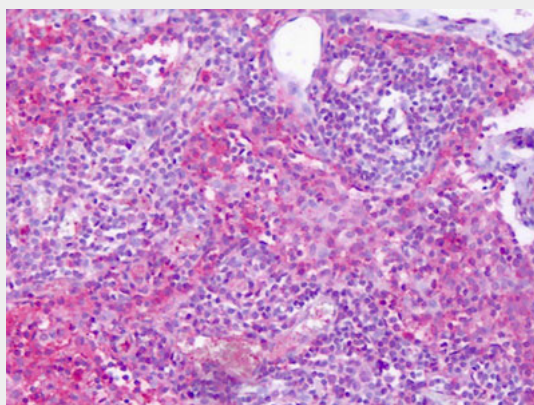
Provided below are standard protocols that you may find useful for product applications.

- [Western Blot](#)
- [Blocking Peptides](#)
- [Dot Blot](#)
- [Immunohistochemistry](#)
- [Immunofluorescence](#)
- [Immunoprecipitation](#)
- [Flow Cytometry](#)
- [Cell Culture](#)

S1PR4 / SIP4 / EDG6 Antibody (Cytoplasmic Domain) - Images



Anti-S1PR4 / EDG6 antibody IHC of human spleen.



Anti-S1PR4 / EDG6 antibody IHC of human lymph node.

S1PR4 / SIP4 / EDG6 Antibody (Cytoplasmic Domain) - Background

Receptor for the lysosphingolipid sphingosine 1- phosphate (S1P). S1P is a bioactive lysophospholipid that elicits diverse physiological effect on most types of cells and tissues. May be involved in cell migration processes that are specific for lymphocytes.

S1PR4 / SIP4 / EDG6 Antibody (Cytoplasmic Domain) - References

Graeler M.H.,et al.Genomics 53:164-169(1998).
Kopatz S.A.,et al.Submitted (JUN-2003) to the EMBL/GenBank/DDBJ databases.
Mural R.J.,et al.Submitted (SEP-2005) to the EMBL/GenBank/DDBJ databases.
Yamazaki Y.,et al.Biochem. Biophys. Res. Commun. 268:583-589(2000).
Van Brocklyn J.R.,et al.Blood 95:2624-2629(2000).