

GPR161 Antibody (C-Terminus)
Rabbit Polyclonal Antibody
Catalog # ALS10091**Specification**

GPR161 Antibody (C-Terminus) - Product Information

Application	IHC-P
Primary Accession	Q8N6U8
Reactivity	Human, Rabbit, Monkey, Pig, Horse, Bovine, Dog
Host	Rabbit
Clonality	Polyclonal
Calculated MW	59kDa KDa
Dilution	IHC-P~~N/A

GPR161 Antibody (C-Terminus) - Additional Information**Gene ID** 23432**Other Names**

G-protein coupled receptor 161, G-protein coupled receptor RE2, GPR161

Target/Specificity

Human GPR161. BLAST analysis of the peptide immunogen showed no homology with other human proteins.

Reconstitution & Storage

Long term: -70°C; Short term: +4°C

Precautions

GPR161 Antibody (C-Terminus) is for research use only and not for use in diagnostic or therapeutic procedures.

GPR161 Antibody (C-Terminus) - Protein Information**Name** GPR161**Function**

Key negative regulator of Shh signaling, which promotes the processing of GLI3 into GLI3R during neural tube development. Recruited by TULP3 and the IFT-A complex to primary cilia and acts as a regulator of the PKA-dependent basal repression machinery in Shh signaling by increasing cAMP levels, leading to promote the PKA-dependent processing of GLI3 into GLI3R and repress the Shh signaling. In presence of SHH, it is removed from primary cilia and is internalized into recycling endosomes, preventing its activity and allowing activation of the Shh signaling. Its ligand is unknown (By similarity).

Cellular Location

Cell projection, cilium membrane; Multi-pass membrane protein. Cell membrane; Multi-pass

membrane protein. Note=Mainly localizes to primary cilium in a TULP3 and IFT-A complex-dependent manner. In presence of SHH, it is removed from primary cilia and is internalized into recycling endosomes and is apparently not degraded (By similarity).

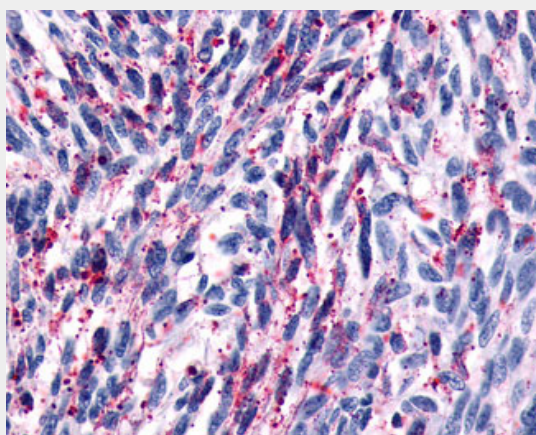
Volume
50 µl

GPR161 Antibody (C-Terminus) - Protocols

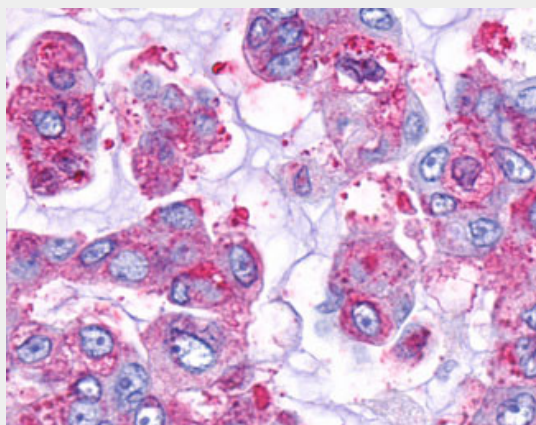
Provided below are standard protocols that you may find useful for product applications.

- [Western Blot](#)
- [Blocking Peptides](#)
- [Dot Blot](#)
- [Immunohistochemistry](#)
- [Immunofluorescence](#)
- [Immunoprecipitation](#)
- [Flow Cytometry](#)
- [Cell Culture](#)

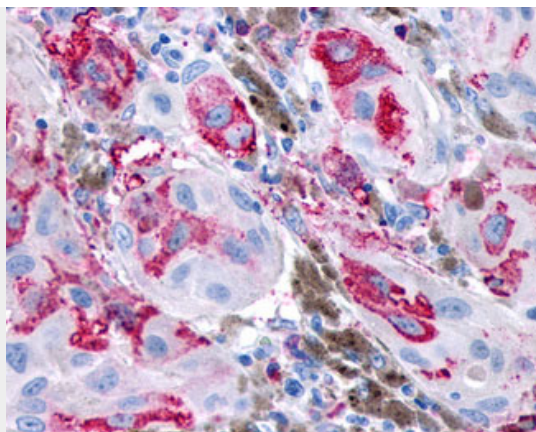
GPR161 Antibody (C-Terminus) - Images



Anti-GPR161 antibody IHC of human Brain, Glioblastoma.



Anti-GPR161 antibody IHC of human Lung, Adenocarcinoma.



Anti-GPR161 antibody IHC of human Skin, Melanoma.

GPR161 Antibody (C-Terminus) - Background

Key negative regulator of Shh signaling, which promotes the processing of GLI3 into GLI3R during neural tube development. Recruited by TULP3 and the IFT-A complex to primary cilia and acts as a regulator of the PKA-dependent basal repression machinery in Shh signaling by increasing cAMP levels, leading to promote the PKA-dependent processing of GLI3 into GLI3R and repress the Shh signaling. In presence of SHH, it is removed from primary cilia and is internalized into recycling endosomes, preventing its activity and allowing activation of the Shh signaling. Its ligand is unknown (By similarity).

GPR161 Antibody (C-Terminus) - References

Warren C.N.,et al.Submitted (APR-2003) to the EMBL/GenBank/DDBJ databases.
Raming K.,et al.Recept. Channels 6:141-151(1998).
Ota T.,et al.Nat. Genet. 36:40-45(2004).
Gregory S.G.,et al.Nature 441:315-321(2006).