

GPR160 Antibody (Extracellular Domain)
Rabbit Polyclonal Antibody
Catalog # ALS10128

Specification

GPR160 Antibody (Extracellular Domain) - Product Information

Application	IHC-P
Primary Accession	O9UJ42
Reactivity	Human
Host	Rabbit
Clonality	Polyclonal
Calculated MW	40kDa KDa
Dilution	IHC-P~~N/A

GPR160 Antibody (Extracellular Domain) - Additional Information

Gene ID 26996

Other Names

Probable G-protein coupled receptor 160, G-protein coupled receptor GPCR1, hGPCR1, GPR160, GPCR150

Target/Specificity

Human GPR160. BLAST analysis of the peptide immunogen showed no homology with other human proteins.

Reconstitution & Storage

Long term: -70°C; Short term: +4°C

Precautions

GPR160 Antibody (Extracellular Domain) is for research use only and not for use in diagnostic or therapeutic procedures.

GPR160 Antibody (Extracellular Domain) - Protein Information

Name GPR160

Synonyms GPCR150

Function

Orphan receptor.

Cellular Location

Cell membrane; Multi-pass membrane protein.

Volume

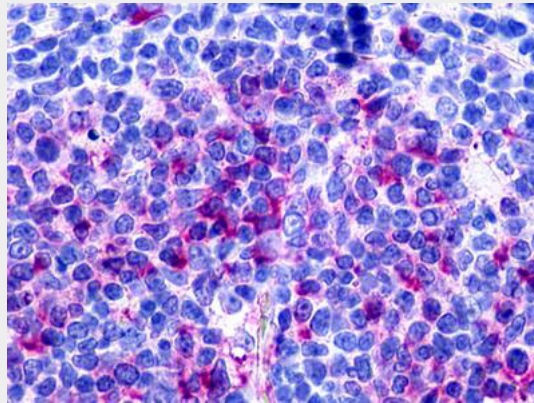
50 µl

GPR160 Antibody (Extracellular Domain) - Protocols

Provided below are standard protocols that you may find useful for product applications.

- [Western Blot](#)
- [Blocking Peptides](#)
- [Dot Blot](#)
- [Immunohistochemistry](#)
- [Immunofluorescence](#)
- [Immunoprecipitation](#)
- [Flow Cytometry](#)
- [Cell Culture](#)

GPR160 Antibody (Extracellular Domain) - Images



Anti-GPR160 antibody ALS10128 IHC of human tonsil.

GPR160 Antibody (Extracellular Domain) - Background

Orphan receptor.

GPR160 Antibody (Extracellular Domain) - References

- Conklin D., et al. Brief. Bioinform. 1:93-99(2000).
Takeda S., et al. FEBS Lett. 520:97-101(2002).
Mural R.J., et al. Submitted (SEP-2005) to the EMBL/GenBank/DDBJ databases.