

HTR6 / 5-HT6 Receptor Antibody (C-Terminus)
Rabbit Polyclonal Antibody
Catalog # ALS10142**Specification**

HTR6 / 5-HT6 Receptor Antibody (C-Terminus) - Product Information

Application	IHC
Primary Accession	P50406
Reactivity	Human, Hamster, Monkey, Horse, Dog
Host	Rabbit
Clonality	Polyclonal
Calculated MW	47kDa KDa

HTR6 / 5-HT6 Receptor Antibody (C-Terminus) - Additional Information**Gene ID** 3362**Other Names**

5-hydroxytryptamine receptor 6, 5-HT-6, 5-HT6, Serotonin receptor 6, HTR6

Target/Specificity

Human HTR6 / 5-HT36. BLAST analysis of the peptide immunogen showed no homology with other human proteins.

Reconstitution & Storage

Long term: -70°C; Short term: +4°C

Precautions

HTR6 / 5-HT6 Receptor Antibody (C-Terminus) is for research use only and not for use in diagnostic or therapeutic procedures.

HTR6 / 5-HT6 Receptor Antibody (C-Terminus) - Protein Information**Name** HTR6**Function**

This is one of the several different receptors for 5- hydroxytryptamine (serotonin), a biogenic hormone that functions as a neurotransmitter, a hormone, and a mitogen. The activity of this receptor is mediated by G proteins that stimulate adenylate cyclase. It has a high affinity for tricyclic psychotropic drugs (By similarity). Controls pyramidal neurons migration during corticogenesis, through the regulation of CDK5 activity (By similarity). Is an activator of TOR signaling (PubMed:23027611).

Cellular Location

Cell membrane; Multi-pass membrane protein.

Tissue Location

Expressed in several human brain regions, most prominently in the caudate nucleus

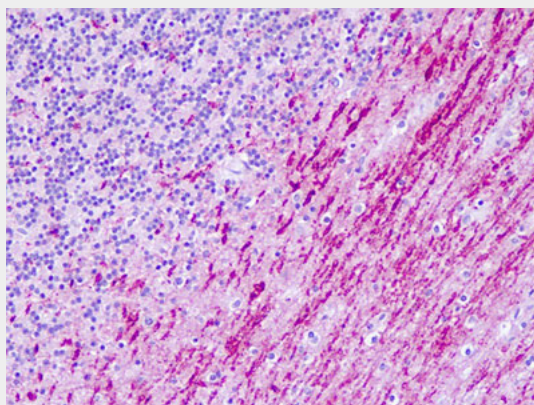
Volume

50 µl

HTR6 / 5-HT6 Receptor Antibody (C-Terminus) - Protocols

Provided below are standard protocols that you may find useful for product applications.

- [Western Blot](#)
- [Blocking Peptides](#)
- [Dot Blot](#)
- [Immunohistochemistry](#)
- [Immunofluorescence](#)
- [Immunoprecipitation](#)
- [Flow Cytometry](#)
- [Cell Culture](#)

HTR6 / 5-HT6 Receptor Antibody (C-Terminus) - Images

Human, Brain, Cerebellum: Formalin-Fixed Paraffin-Embedded (FFPE)

HTR6 / 5-HT6 Receptor Antibody (C-Terminus) - Background

This is one of the several different receptors for 5- hydroxytryptamine (serotonin), a biogenic hormone that functions as a neurotransmitter, a hormone, and a mitogen. The activity of this receptor is mediated by G proteins that stimulate adenylate cyclase. It has a high affinity for tricyclic psychotropic drugs (By similarity). Controls pyramidal neurons migration during corticogenesis, through the regulation of CDK5 activity (By similarity). Is an activator of TOR signaling (PubMed:23027611).

HTR6 / 5-HT6 Receptor Antibody (C-Terminus) - References

Kohen R.,et al.J. Neurochem. 66:47-56(1996).
Kopatz S.A.,et al.Submitted (OCT-2003) to the EMBL/GenBank/DDBJ databases.
Gregory S.G.,et al.Nature 441:315-321(2006).
Mural R.J.,et al.Submitted (JUL-2005) to the EMBL/GenBank/DDBJ databases.
Ullmer C.,et al.FEBS Lett. 370:215-221(1995).