

CALCR / Calcitonin Receptor Antibody (C-Terminus)
Rabbit Polyclonal Antibody
Catalog # ALS10163

Specification

CALCR / Calcitonin Receptor Antibody (C-Terminus) - Product Information

Application	IHC
Primary Accession	P30988
Reactivity	Human
Host	Rabbit
Clonality	Polyclonal
Calculated MW	59kDa KDa

CALCR / Calcitonin Receptor Antibody (C-Terminus) - Additional Information

Gene ID 799

Other Names

Calcitonin receptor, CT-R, CALCR

Target/Specificity

Human Calcitonin Receptor. BLAST analysis of the peptide immunogen showed no homology with other human proteins.

Reconstitution & Storage

Long term: -70°C; Short term: +4°C

Precautions

CALCR / Calcitonin Receptor Antibody (C-Terminus) is for research use only and not for use in diagnostic or therapeutic procedures.

CALCR / Calcitonin Receptor Antibody (C-Terminus) - Protein Information

Name CALCR ([HGNC:1440](#))

Function

This is a receptor for calcitonin. The activity of this receptor is mediated by G proteins which activate adenylyl cyclase. The calcitonin receptor is thought to couple to the heterotrimeric guanosine triphosphate-binding protein that is sensitive to cholera toxin.

Cellular Location

Cell membrane; Multi-pass membrane protein.

Volume

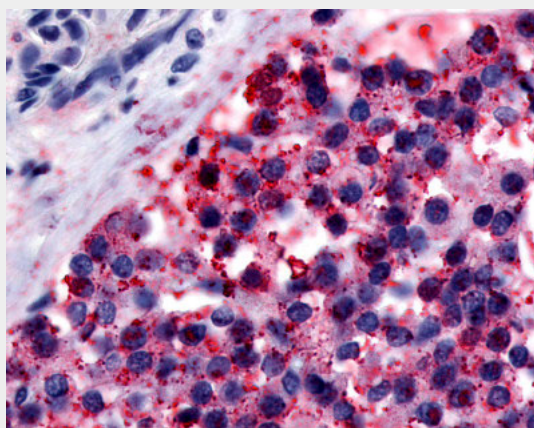
50 µl

CALCR / Calcitonin Receptor Antibody (C-Terminus) - Protocols

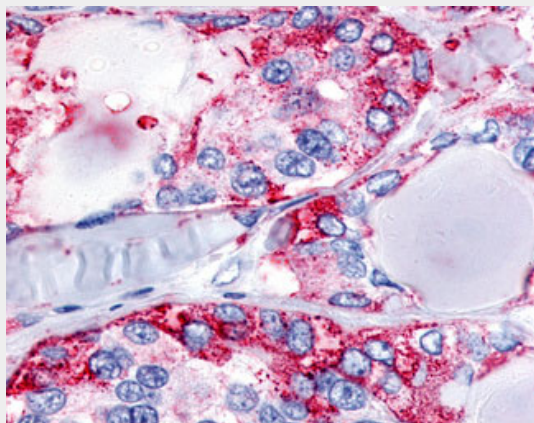
Provided below are standard protocols that you may find useful for product applications.

- [Western Blot](#)
- [Blocking Peptides](#)
- [Dot Blot](#)
- [Immunohistochemistry](#)
- [Immunofluorescence](#)
- [Immunoprecipitation](#)
- [Flow Cytometry](#)
- [Cell Culture](#)

CALCR / Calcitonin Receptor Antibody (C-Terminus) - Images



Anti-Calcr antibody ALS10163 IHC of human parathyroid.



Anti-CALCR / Calcitonin Receptor antibody IHC of human Thyroid, Medullary Carcinoma.

CALCR / Calcitonin Receptor Antibody (C-Terminus) - Background

This is a receptor for calcitonin. The activity of this receptor is mediated by G proteins which activate adenyl cyclase. The calcitonin receptor is thought to couple to the heterotrimeric guanosine triphosphate-binding protein that is sensitive to cholera toxin.

CALCR / Calcitonin Receptor Antibody (C-Terminus) - References

Gorn A.H., et al. J. Clin. Invest. 90:1726-1735(1992).
Kuestner R.E., et al. Mol. Pharmacol. 46:246-255(1994).

Albrandt K., et al. *Endocrinology* 136:5377-5384(1995).
Frendo J.L., et al. *FEBS Lett.* 342:214-216(1994).
Nishikawa T., et al. *FEBS Lett.* 458:409-414(1999).