

CCKAR / CCK1R Antibody (Internal)
Rabbit Polyclonal Antibody
Catalog # ALS10175**Specification**

CCKAR / CCK1R Antibody (Internal) - Product Information

Application	IHC
Primary Accession	P32238
Reactivity	Human, Monkey, Dog
Host	Rabbit
Clonality	Polyclonal
Calculated MW	48kDa KDa

CCKAR / CCK1R Antibody (Internal) - Additional Information**Gene ID** 886**Other Names**

Cholecystokinin receptor type A, CCK-A receptor, CCK-AR, Cholecystokinin-1 receptor, CCK1-R, CCKAR, CCKRA

Target/Specificity

Human CCKAR. BLAST analysis of the peptide immunogen showed no homology with other human proteins.

Reconstitution & Storage

Long term: -70°C; Short term: +4°C

Precautions

CCKAR / CCK1R Antibody (Internal) is for research use only and not for use in diagnostic or therapeutic procedures.

CCKAR / CCK1R Antibody (Internal) - Protein Information**Name** CCKAR**Synonyms** CCKRA**Function**

Receptor for cholecystokinin. Mediates pancreatic growth and enzyme secretion, smooth muscle contraction of the gall bladder and stomach. Has a 1000-fold higher affinity for CCK rather than for gastrin. It modulates feeding and dopamine-induced behavior in the central and peripheral nervous system. This receptor mediates its action by association with G proteins that activate a phosphatidylinositol-calcium second messenger system.

Cellular Location

Cell membrane; Multi-pass membrane protein.

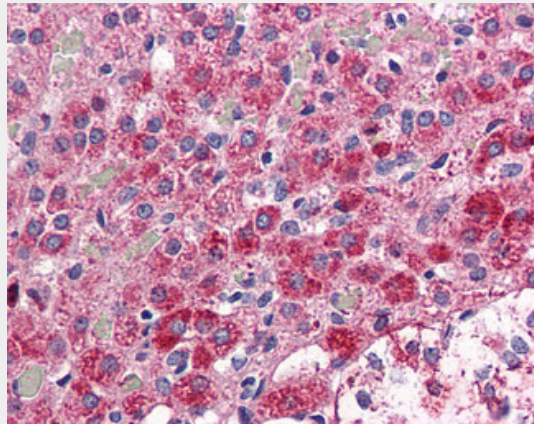
Volume

50 µl

CCKAR / CCK1R Antibody (Internal) - Protocols

Provided below are standard protocols that you may find useful for product applications.

- [Western Blot](#)
- [Blocking Peptides](#)
- [Dot Blot](#)
- [Immunohistochemistry](#)
- [Immunofluorescence](#)
- [Immunoprecipitation](#)
- [Flow Cytometry](#)
- [Cell Culture](#)

CCKAR / CCK1R Antibody (Internal) - Images

Anti-CCKAR antibody ALS10175 IHC of human adrenal.

CCKAR / CCK1R Antibody (Internal) - Background

Receptor for cholecystokinin. Mediates pancreatic growth and enzyme secretion, smooth muscle contraction of the gall bladder and stomach. Has a 1000-fold higher affinity for CCK rather than for gastrin. It modulates feeding and dopamine-induced behavior in the central and peripheral nervous system. This receptor mediates its action by association with G proteins that activate a phosphatidylinositol-calcium second messenger system.

CCKAR / CCK1R Antibody (Internal) - References

- Ulrich C.D., et al. *Biochem. Biophys. Res. Commun.* 193:204-211(1993).
Wank S.A., et al. *Biochem. Biophys. Res. Commun.* 194:811-818(1993).
Miller L.J., et al. *Gastroenterology* 109:1375-1380(1995).
Funakoshi A., et al. *FEBS Lett.* 466:264-266(2000).
Kopatz S.A., et al. Submitted (JUN-2003) to the EMBL/GenBank/DDBJ databases.