

**CCRL2 Antibody (Cytoplasmic Domain)**  
**Rabbit Polyclonal Antibody**  
**Catalog # ALS10263****Specification**

---

**CCRL2 Antibody (Cytoplasmic Domain) - Product Information**

Application	IHC-P
Primary Accession	<a href="#">O00421</a>
Reactivity	Human
Host	Rabbit
Clonality	Polyclonal
Calculated MW	40kDa KDa
Dilution	IHC-P~~N/A

**CCRL2 Antibody (Cytoplasmic Domain) - Additional Information****Gene ID** 9034**Other Names**

C-C chemokine receptor-like 2, Chemokine receptor CCR11, Chemokine receptor X, Putative MCP-1 chemokine receptor, CCRL2, CCR11, CCR6, CKRX, CRAM, HCR

**Target/Specificity**

Human CCRL2. BLAST analysis of the peptide immunogen showed no homology with other human proteins.

**Reconstitution & Storage**

Long term: -70°C; Short term: +4°C

**Precautions**

CCRL2 Antibody (Cytoplasmic Domain) is for research use only and not for use in diagnostic or therapeutic procedures.

**CCRL2 Antibody (Cytoplasmic Domain) - Protein Information****Name** CCRL2**Synonyms** CCR11, CCR6, CKRX, CRAM, HCR**Function**

Receptor for CCL19 and chemerin/RARRES2. Does not appear to be a signaling receptor, but may have a role in modulating chemokine- triggered immune responses by capturing and internalizing CCL19 or by presenting RARRES2 ligand to CMKLR1, a functional signaling receptors. Plays a critical role for the development of Th2 responses.

**Cellular Location**

Cell membrane; Multi-pass membrane protein

**Tissue Location**

Expressed abundantly in immunal tissues such as spleen, fetal liver, lymph node and bone marrow. Strong expression also in lung and heart. Expressed in almost all hematopoietic cells including monocytes, macrophages, PMNs, T-cells (both CD4+ and CD8+), monocyte-derived iDCs, NK cells, and CD34+ progenitor cells. B-cells expressed isoform 1 but not isoform 2. Up-regulated on synovial neutrophils of rheumatoid arthritis patients

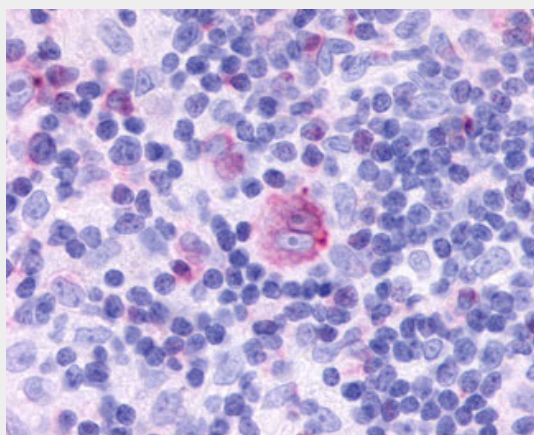
**Volume**

50 µl

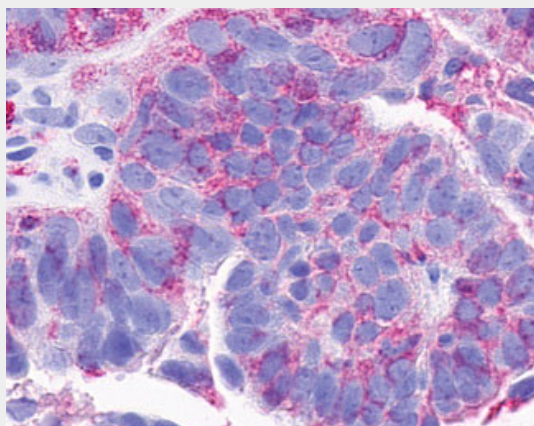
**CCRL2 Antibody (Cytoplasmic Domain) - Protocols**

Provided below are standard protocols that you may find useful for product applications.

- [Western Blot](#)
- [Blocking Peptides](#)
- [Dot Blot](#)
- [Immunohistochemistry](#)
- [Immunofluorescence](#)
- [Immunoprecipitation](#)
- [Flow Cytometry](#)
- [Cell Culture](#)

**CCRL2 Antibody (Cytoplasmic Domain) - Images**

Anti-CCRL2 antibody IHC of human Lymph Node, Hodgkins Lymphoma.



Anti-CCRL2 antibody IHC of human Ovary, Carcinoma.

#### **CCRL2 Antibody (Cytoplasmic Domain) - Background**

Receptor for CCL19 and chemerin/RARRES2. Does not appear to be a signaling receptor, but may have a role in modulating chemokine-triggered immune responses by capturing and internalizing CCL19 or by presenting RARRES2 ligand to CMKLR1, a functional signaling receptors. Plays a critical role for the development of Th2 responses.

#### **CCRL2 Antibody (Cytoplasmic Domain) - References**

Fan P.,et al.Biochem. Biophys. Res. Commun. 243:264-268(1998).  
Ansari-Lari M.A.,et al.Submitted (JUL-1997) to the EMBL/GenBank/DDBJ databases.  
Gish K.,et al.Submitted (JUL-1997) to the EMBL/GenBank/DDBJ databases.  
Biber K.P.H.,et al.Submitted (AUG-2001) to the EMBL/GenBank/DDBJ databases.  
Ota T.,et al.Nat. Genet. 36:40-45(2004).