

CXCR6 Antibody (C-Terminus)
Rabbit Polyclonal Antibody
Catalog # ALS10266

Specification

CXCR6 Antibody (C-Terminus) - Product Information

Application	IHC-P
Primary Accession	O00574
Reactivity	Human, Monkey
Host	Rabbit
Clonality	Polyclonal
Calculated MW	39kDa KDa
Dilution	IHC-P~~N/A

CXCR6 Antibody (C-Terminus) - Additional Information

Gene ID 10663

Other Names

C-X-C chemokine receptor type 6, CXC-R6, CXCR-6, CDw186, G-protein coupled receptor STRL33, G-protein coupled receptor bonzo, CD186, CXCR6, BONZO, STRL33, TYMSTR

Target/Specificity

Human CXCR6. BLAST analysis of the peptide immunogen showed no homology with other human proteins.

Reconstitution & Storage

Long term: -70°C; Short term: +4°C

Precautions

CXCR6 Antibody (C-Terminus) is for research use only and not for use in diagnostic or therapeutic procedures.

CXCR6 Antibody (C-Terminus) - Protein Information

Name CXCR6

Synonyms BONZO, STRL33, TYMSTR

Function

Receptor for the C-X-C chemokine CXCL16. Used as a coreceptor by SIVs and by strains of HIV-2 and m-tropic HIV-1.

Cellular Location

Cell membrane; Multi-pass membrane protein.

Tissue Location

Expressed in lymphoid tissues and activated T cells

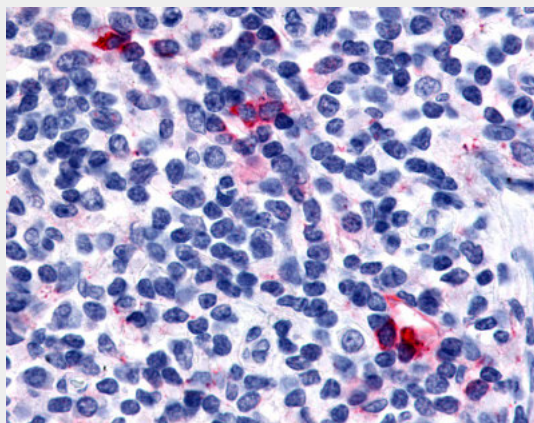
Volume
50 μ l

CXCR6 Antibody (C-Terminus) - Protocols

Provided below are standard protocols that you may find useful for product applications.

- [Western Blot](#)
- [Blocking Peptides](#)
- [Dot Blot](#)
- [Immunohistochemistry](#)
- [Immunofluorescence](#)
- [Immunoprecipitation](#)
- [Flow Cytometry](#)
- [Cell Culture](#)

CXCR6 Antibody (C-Terminus) - Images



Anti-CXCR6 antibody ALS10266 IHC of human tonsil, interfollicular zone.

CXCR6 Antibody (C-Terminus) - Background

Receptor for the C-X-C chemokine CXCL16. Used as a coreceptor by SIVs and by strains of HIV-2 and m-tropic HIV-1.

CXCR6 Antibody (C-Terminus) - References

Deng H.K., et al. Nature 388:296-300(1997).
Liao F., et al. J. Exp. Med. 185:2015-2023(1997).
Loetscher M., et al. Curr. Biol. 7:652-660(1997).
An P., et al. Submitted (OCT-1997) to the EMBL/GenBank/DDBJ databases.
Kopatz S.A., et al. Submitted (JUN-2003) to the EMBL/GenBank/DDBJ databases.