

**HRH2 / Histamine H2 Receptor Antibody (Cytoplasmic Domain)  
Rabbit Polyclonal Antibody  
Catalog # ALS10286**

**Specification**

---

**HRH2 / Histamine H2 Receptor Antibody (Cytoplasmic Domain) - Product Information**

Application	IHC-P
Primary Accession	<a href="#">P25021</a>
Reactivity	Human, Monkey
Host	Rabbit
Clonality	Polyclonal
Calculated MW	40kDa KDa
Dilution	IHC-P~~N/A

**HRH2 / Histamine H2 Receptor Antibody (Cytoplasmic Domain) - Additional Information**

**Gene ID** 3274

**Other Names**

Histamine H2 receptor, H2R, HH2R, Gastric receptor I, HRH2

**Target/Specificity**

Human HRH2 / Histamine H2 Receptor. BLAST analysis of the peptide immunogen showed no homology with other human proteins.

**Reconstitution & Storage**

Long term: -70°C; Short term: +4°C

**Precautions**

HRH2 / Histamine H2 Receptor Antibody (Cytoplasmic Domain) is for research use only and not for use in diagnostic or therapeutic procedures.

**HRH2 / Histamine H2 Receptor Antibody (Cytoplasmic Domain) - Protein Information**

**Name** HRH2

**Function**

The H2 subclass of histamine receptors mediates gastric acid secretion. Also appears to regulate gastrointestinal motility and intestinal secretion. Possible role in regulating cell growth and differentiation. The activity of this receptor is mediated by G proteins which activate adenylyl cyclase and, through a separate G protein-dependent mechanism, the phosphoinositide/protein kinase (PKC) signaling pathway (By similarity).

**Cellular Location**

Cell membrane; Multi-pass membrane protein.

**Volume**

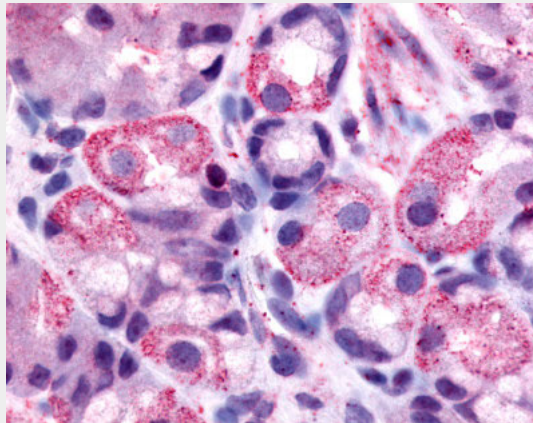
50 µl

## HRH2 / Histamine H2 Receptor Antibody (Cytoplasmic Domain) - Protocols

Provided below are standard protocols that you may find useful for product applications.

- [Western Blot](#)
- [Blocking Peptides](#)
- [Dot Blot](#)
- [Immunohistochemistry](#)
- [Immunofluorescence](#)
- [Immunoprecipitation](#)
- [Flow Cytometry](#)
- [Cell Culture](#)

## HRH2 / Histamine H2 Receptor Antibody (Cytoplasmic Domain) - Images



Anti-HRH2 / Histamine H2 Receptor antibody ALS10286 IHC of human stomach, parietal cells.

## HRH2 / Histamine H2 Receptor Antibody (Cytoplasmic Domain) - Background

The H2 subclass of histamine receptors mediates gastric acid secretion. Also appears to regulate gastrointestinal motility and intestinal secretion. Possible role in regulating cell growth and differentiation. The activity of this receptor is mediated by G proteins which activate adenylyl cyclase and, through a separate G protein-dependent mechanism, the phosphoinositide/protein kinase (PKC) signaling pathway (By similarity).

## HRH2 / Histamine H2 Receptor Antibody (Cytoplasmic Domain) - References

- Gantz I., et al. *Biochem. Biophys. Res. Commun.* 178:1386-1392(1991).  
Nishi T., et al. *Biochem. Biophys. Res. Commun.* 210:616-623(1995).  
Murakami H., et al. *FEBS Lett.* 451:327-331(1999).  
Kitano T., et al. *Mol. Biol. Evol.* 21:936-944(2004).  
Puhl H.L. III, et al. Submitted (JUL-2002) to the EMBL/GenBank/DDBJ databases.