

GPR49 / LGR5 Antibody (N-Terminus)
Rabbit Polyclonal Antibody
Catalog # ALS10308**Specification**

GPR49 / LGR5 Antibody (N-Terminus) - Product Information

Application	IHC-P
Primary Accession	O75473
Reactivity	Human, Monkey
Host	Rabbit
Clonality	Polyclonal
Calculated MW	100kDa KDa
Dilution	IHC-P~~N/A

GPR49 / LGR5 Antibody (N-Terminus) - Additional Information**Gene ID** 8549**Other Names**

Leucine-rich repeat-containing G-protein coupled receptor 5, G-protein coupled receptor 49, G-protein coupled receptor 67, G-protein coupled receptor HG38, LGR5, GPR49, GPR67

Target/Specificity

Human GPR49 / LGR5. BLAST analysis of the peptide immunogen showed no homology with other human proteins.

Reconstitution & Storage

Long term: -70°C; Short term: +4°C

Precautions

GPR49 / LGR5 Antibody (N-Terminus) is for research use only and not for use in diagnostic or therapeutic procedures.

GPR49 / LGR5 Antibody (N-Terminus) - Protein Information**Name** LGR5**Synonyms** GPR49, GPR67**Function**

Receptor for R-spondins that potentiates the canonical Wnt signaling pathway and acts as a stem cell marker of the intestinal epithelium and the hair follicle. Upon binding to R-spondins (RSPO1, RSPO2, RSPO3 or RSPO4), associates with phosphorylated LRP6 and frizzled receptors that are activated by extracellular Wnt receptors, triggering the canonical Wnt signaling pathway to increase expression of target genes. In contrast to classical G-protein coupled receptors, does not activate heterotrimeric G-proteins to transduce the signal. Involved in the development and/or maintenance of the adult intestinal stem cells during postembryonic development.

Cellular Location

Cell membrane; Multi-pass membrane protein. Golgi apparatus, trans-Golgi network membrane; Multi-pass membrane protein Note=Rapidly and constitutively internalized to the trans-Golgi network at steady state. Internalization to the trans-Golgi network may be the result of phosphorylation at Ser-861 and Ser-864; however, the phosphorylation event has not been proven (PubMed:23439653)

Tissue Location

Expressed in skeletal muscle, placenta, spinal cord, and various region of brain. Expressed at the base of crypts in colonic and small mucosa stem cells. In premalignant cancer expression is not restricted to the crypt base. Overexpressed in cancers of the ovary, colon and liver.

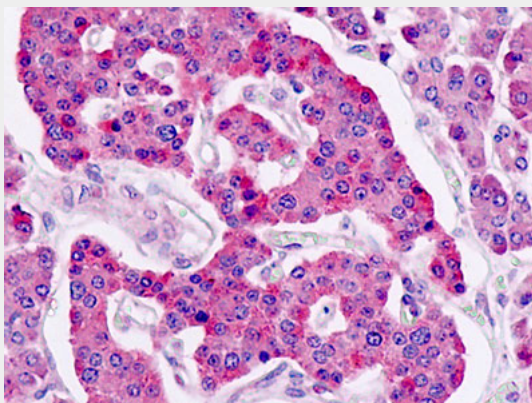
Volume

50 µl

GPR49 / LGR5 Antibody (N-Terminus) - Protocols

Provided below are standard protocols that you may find useful for product applications.

- [Western Blot](#)
- [Blocking Peptides](#)
- [Dot Blot](#)
- [Immunohistochemistry](#)
- [Immunofluorescence](#)
- [Immunoprecipitation](#)
- [Flow Cytometry](#)
- [Cell Culture](#)

GPR49 / LGR5 Antibody (N-Terminus) - Images

Human, Pancreas, Islets: Formalin-Fixed Paraffin-Embedded (FFPE)

GPR49 / LGR5 Antibody (N-Terminus) - Background

Receptor for R-spondins that potentiates the canonical Wnt signaling pathway and acts as a stem cell marker of the intestinal epithelium and the hair follicle. Upon binding to R-spondins (RSPO1, RSPO2, RSPO3 or RSPO4), associates with phosphorylated LRP6 and frizzled receptors that are activated by extracellular Wnt receptors, triggering the canonical Wnt signaling pathway to increase expression of target genes. In contrast to classical G-protein coupled receptors, does not activate heterotrimeric G-proteins to transduce the signal. Involved in the development and/or maintenance of the adult intestinal stem cells during postembryonic development.

GPR49 / LGR5 Antibody (N-Terminus) - References

McDonald T.,et al.Biochem. Biophys. Res. Commun. 247:266-270(1998).
Hsu S.Y.,et al.Mol. Endocrinol. 12:1830-1845(1998).
Rot S.,et al.Submitted (APR-2010) to the EMBL/GenBank/DDBJ databases.
Scherer S.E.,et al.Nature 440:346-351(2006).
Yamamoto Y.,et al.Hepatology 37:528-533(2003).